



KENWOOD



**MS Two-Way Radio
Express Products List (EPL) 3744**

EFJohnson
a JVC KENWOOD Company

Effective Date: October 20, 2019

Table of Contents

EFJ-JVCKENWOOD Repeaters

[Low Power](#)

[NXR-5700](#)

[NXR-5800](#)

[NXR-5900](#)

[NXR-5901](#)

[NXR-710](#)

[NXR-810](#)

[TKR-D710](#)

[TKR-D710 LP PKG](#)

[TKR-D810](#)

[TKR-D810 LP PKG](#)

[KAS-20](#)

[KAIROS KA-160](#)

[KAIROS KA-450/500](#)

NXR-710/810

UHF/VHF Low Power Base Stations and Repeaters



BASE STATION		EPL	LIST
---------------------	--	------------	-------------

NXB7100PS	Low Power Base Station, 136-174MHz (NXR-710K, KSGPS20200)	1803.75	2,405.00
NXB8101PS	Low Power Base Station, 450-520MHz (NXR-810K, KSGPS20200)	1803.75	2,405.00
NXB8102PS	Low Power Base Station, 400-470MHz (NXR-810K2, KSGPS20200)	1803.75	2,405.00

REPEATER STATION		EPL	LIST
-------------------------	--	------------	-------------

NXR7100PS	Low Power Repeater Station, 136-174MHz (NXR-710K, KSGPS20200)	1803.75	2,405.00
NXR8101PS	Low Power Repeater Station, 450-520MHz (NXR-810K, KSGPS20200)	1803.75	2,405.00
NXR8102PS	Low Power Repeater Station, 400-470MHz (NXR-810K2, KSGPS20200)	1803.75	2,405.00

REPEATER STATION WITH DUPLEXER		EPL	LIST
---------------------------------------	--	------------	-------------

Note: Duplexers are not available for all frequencies. The default range of duplexers are between 148-160 MHz (VHF) with a 5MHz split between TX and RX, and between 450-460MHz (UHF). Other frequencies or VHF band splits may be available by special order (non-returnable and non-refundable). Pricing for special order duplexers may be higher.

NXR7100PSD	Low Power Repeater Station with Duplexer, 148-160MHz (NXR-710K, KSGPS20200, KSGDX62001, KSGCB20008, KSGCB20010)	2325.00	3,100.00
NXR8101PSD	Low Power Repeater Station with Duplexer, 450-460MHz (NXR-810K, KSGPS20200, KSGDX63002, KSGCB20008, KSGCB20010)	2325.00	3,100.00
NXR8102PSD	Low Power Repeater Station with Duplexer, 450-460MHz (NXR-810K2, KSGPS20200, KSGDX63002, KSGCB20008, KSGCB20010)	2325.00	3,100.00

REPEATER STATION WITH CONVENTIONAL IP NETWORK FUNCTIONALITY		EPL	LIST
--	--	------------	-------------

NXR7100PSI	Low Power Repeater Station, 136-174MHz (NXR-710K, KSGPS20200, KTI-3M)	2002.50	2,670.00
NXR8101PSI	Low Power Repeater Station, 450-520MHz (NXR-810K, KSGPS20200, KTI-3M)	2002.50	2,670.00
NXR8102PSI	Low Power Repeater Station, 400-470MHz (NXR-810K2, KSGPS20200, KTI-3M)	2002.50	2,670.00

REPEATER STATION WITH DUPLEXER AND IP NETWORK FUNCTIONALITY		EPL	LIST
--	--	------------	-------------

Note: Duplexers are not available for all frequencies. The default range of duplexers are between 148-160 MHz (VHF) with a 5MHz split between TX and RX, and, and between 450-460MHz (UHF). Other frequencies or VHF band splits may be available by special order (non-returnable and non-refundable). Pricing for special order duplexers may be higher. Duplexer and KTI-3M are mounted inside the Repeater; a separate Rack-Mount Power Supply is provided

NXR7100PSDI	Low Power Repeater Station with Duplexer, 148-160MHz (NXR-710K, KSGPS20201, KSGDX62001, KTI-3M, KSGCB20008, KSGCB20010)	2655.00	3,540.00
NXR8101PSDI	Low Power Repeater Station with Duplexer, 450-460MHz (NXR-810K, KSGPS20201, KSGDX63002, KTI-3M, KSGCB20008, KSGCB20010)	2655.00	3,540.00
NXR8102PSDI	Low Power Repeater Station with Duplexer, 450-460MHz (NXR-810K2, KSGPS20201, KSGDX63002, KTI-3M, KSGCB20008, KSGCB20010)	2655.00	3,540.00

BASIC ACCESSORIES		EPL	LIST
--------------------------	--	------------	-------------

KPG-46UM	Programming Cable	118.88	158.50
----------	-------------------	--------	--------

KPG-129DNK	Programming Software (NXR-710/810)	77.44	103.25
B51-8901-00	NXR-710 Service Manual	37.50	50.00
B51-8902-00	NXR-810 Service Manual	37.50	50.00
KMC-9C	Desktop Microphone	64.50	86.00
KSGMT30001	2RU Desktop Enclosure - 16" deep by 20.5" wide by 5" high	150.00	200.00
KSGMT30004	4RU Desktop Enclosure - 16" deep by 20.5" wide by 8.5" high	161.25	215.00
COMPONENTS		EPL	LIST
NXR-710K	Repeater, Digital, VHF, 136-174MHz, 25-50W	1612.50	2,150.00
NXR-810K	Repeater, Digital, UHF, 450-520MHz, 1-40W	1612.50	2,150.00
NXR-810K2	Repeater, Digital, UHF, 400-470MHz, 1-40W	1612.50	2,150.00
KSGPS20200	DC Switching Power Supply	191.25	255.00
KSGDX62001	Duplexer, VHF, 148-160MHz, 6 cavities, 4.5MHz sep, N-F Note: This is the default frequency range. Other ranges may be available by special order.	446.25	595.00
COMPONENTS, CON'T		EPL	LIST
KSGDX63002	Duplexer, UHF, 450-460MHz, 6 cavities, 5MHz sep, N-F Note: This is the default frequency range. Other ranges may be available by special order.	446.25	595.00
KSGCB20008	Cable, 10" 90 deg N-M to 90 deg BNC-M, RG-142 coaxial	37.50	50.00
KSGCB20010	Cable, 10", 90 deg N-M to 90 deg N-M, RG-142 coaxial	37.50	50.00
KTI-3M	Network Interface Unit	198.75	265.00
KSGPS20201	Power Supply, 20A, no meter, RM-2512 w/BB6 & 8 place fuse	322.50	430.00

NXR-5700

VHF Digital & FM Base Repeaters - 136-174MHz



GENERAL:

- Conventional / Conventional IP Network
- NEXEDGE Gen1 System
- NEXEDGE Gen2 System
- Occupies 1 RU
- Wideband Coverage
- 25/5/0.5 W RF Output Power
- Operates in analog mode at 25 KHz or 12.5 KHz, or in digital mode at 12.5 KHz or 6.25 KHz.
- Built-in 0.5 ppm TCXO
- LED Status Indicators
- USB 2.0 Type-B Interface
- Programming information is required to properly configure each system. Please contact your Kenwood Systems Regional Manager for assistance.

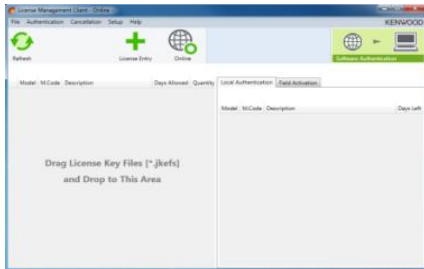
GENERAL OPTIONS:

- External amplifier with built-in T/R antenna switching for simplex operation
- Wire line remote control
- Power supply options such as integrated SmartCharger and Low Voltage Disconnect for battery backup applications.
- High performance 6 cavity BpBr duplexer is available
- Multi-channel combining systems quoted on an individual system basis
- Mounting options include 20 RU (42") and 40 RU (77") locking cabinets in addition to 17 RU (3') and 45 RU (7') open equipment racks.
- Amplifier choices include 50W, 110W, 150W or 250W options.
- Custom configurations are available; contact your Kenwood Systems Regional Sales Manager for details.

TRUNKING OPTIONS

- Enabling of Trunking feature
- Secondary, restricted-level service keys for management of less critical system parameters available. Each trunking system requires an Ethernet switch per site. Routers are optional for a single-site system but required for multi-site systems.
- System switches and routers are recommended , but most commercially available network equipment is compatible.

NXR-5700 REPEATER	EPL	LIST
NXR-5700K Repeater, Digital, VHF, 136-174MHz, 25W, 0.5ppm TCXO built-in	3999.75	5333.00
LICENSING SYSTEM	EPL	LIST



Note: KPT-300LMC is compatible with Windows Vista/7/8/8.1 Only. Windows XP is not supported.



KPT-300LMC License Management Client

KPT-300LMC is a required software package that is used to authenticate **software**

KPT-300LMC is available as a free download from Kenwood Tools and is also supplied with applicable software.

NOTE: A license key is required for the KPT-300LMC to authenticate the software prior to use. To receive a license key, complete the "Account Request Form" and return to the Kenwood Systems Order Desk.

License Keys will be E-Mailed to the address provided on the Account Request Form. A hard copy will follow by mail for your records.

KPT-300LMC	License Management Client	NC	NC
L-5000	Account Registration Key Note: specify the number of PC's used for Radio Feature License Activation.	NC	NC

SOFTWARE LICENSE OPTIONS	EPL	LIST
--------------------------	-----	------

TO PLACE AN ORDER FOR SOFTWARE:

1. Complete the attached Software License Key Request Form.
2. Submit along with your PO to the SYSTEMS Order Desk via:
 - a) E-Mail: systemsorderdesk@us.jvckenwood.com
 - b) Fax: (678) 957-1880
3. License Keys will be E-mailed to the address provided on the order form. A hard copy will follow by mail for your records.

Software License Key Discount Structure

1 License Key	---
2 ~ 4 License Keys	10% OFF
5 ~ 14 License Keys	35% OFF
15 ~ 24 License Keys	40% OFF

SOFTWARE LICENSE OPTIONS	EPL	LIST
--------------------------	-----	------

KPG-D2NK	License Key for KPG-D2NK Programming Software for NXR-5000 Repeater (Windows® Vista/7/8/8.1) Note: - Requires KPT-300LMC for authentication. - To program NXR-5000, Type A/B USB Cable (KSGCB10206) may be required.	77.44	103.25
----------	---	-------	--------

RADIO FEATURE LICENSE OPTIONS

PCs registered under the same KPT-300LMC Account Registration Key (License Key) will be able to authentic Radio Features that can then be viewed / shared / managed by all registered users for the account.

*** TO PLACE AN ORDER FOR RADIO FEATURE LICENSES:**

1. Complete the attached Radio Feature Request Form.
2. Submit along with your PO to the SYSTEMS Order Desk via:
 - a) E-Mail: systemsorderdesk@us.jvckenwood.com
 - b) Fax: (678) 957-1880
3. License Keys will be E-mailed to the address provided on the request form. A hard copy will follow by mail for your records.

Note: Radio Feature License Keys can be transferable from a radio to radio within 72 hours count started from being authenticated to a Radio. Once license transferred radio is authenticated by KPT-300LMC, 72 hours is reset and count started from first.

KWD-NX50VTR	License Key for NXR-5000 Vote System	375.00	500.00
-------------	--------------------------------------	--------	--------

BASIC ACCESSORIES	EPL	LIST
-------------------	-----	------

KXK-3M3	6.25KHz "Very Narrow Band" Option High Stability Reference Oscillator	2499.75	3333.00
KPG-149RM	Nexedge Repeater Monitoring Software	187.50	250.00
KSGCB10206	Programming USB A/B Cable	12.75	17.00
B5B-7216-10	NXR-5700 Service Manual	37.50	50.00

RF BASE STATION AMPLIFIER OPTIONS	EPL	LIST
-----------------------------------	-----	------

Note: Includes Two Cables for Radio Connectivity

KSGPA22423	136-174MHz, 3W Input, 25-50W Output	1492.50	1990.00
KSGPA22400	136-144MHz, 3W Input, 55-110W Output	1878.75	2505.00
KSGPA22410	144-152MHz, 3W Input, 55-110W Output	1878.75	2505.00
KSGPA22420	152-162MHz, 3W Input, 55-110W Output	1878.75	2505.00
KSGPA22430	162-174MHz, 3W Input, 55-110W Output	1878.75	2505.00
KSGPA22451	136-144MHz, 3W Input, 150W Output	2790.00	3720.00
KSGPA22452	144-152MHz, 3W Input, 150W Output	2790.00	3720.00
KSGPA22453	152-162MHz, 3W Input, 150W Output	2790.00	3720.00
KSGPA22454	162-174MHz, 3W Input, 150W Output	2790.00	3720.00
KSGPA22258	152-162MHz, 3W Input, 250W Output	3450.00	4600.00

KSGPA22523	136-174MHz, 25W Input, 25-50W Output	1492.50	1990.00
KSGPA22510	144-152MHz, 25W Input, 55-110W Output	1878.75	2505.00
KSGPA22520	152-162MHz, 25W Input, 55-110W Output	1878.75	2505.00
KSGPA22530	162-174MHz, 25W Input, 55-110W Output	1878.75	2505.00
KSGPA22552	144-152MHz, 25W Input, 150W Output	2790.00	3720.00
KSGPA22553	152-162MHz, 25W Input, 150W Output	2790.00	3720.00
KSGPA22554	162-174MHz, 25W Input, 150W Output	2790.00	3720.00

RF REPEATER STATION AMPLIFIER OPTIONS		EPL	LIST
--	--	------------	-------------

Note: Includes One Cable for Radio Connectivity

KSGPA22403	136-174MHz, 3W Input, 25-50W Output	1248.75	1665.00
KSGPA22411	136-144MHz, 3W Input, 55-110W Output	1620.00	2160.00
KSGPA22412	144-152MHz, 3W Input, 55-110W Output	1620.00	2160.00
KSGPA22413	152-162MHz, 3W Input, 55-110W Output	1620.00	2160.00
KSGPA22414	162-174MHz, 3W Input, 55-110W Output	1620.00	2160.00
KSGPA22441	136-144MHz, 3W Input, 150W Output	2295.00	3060.00

RF REPEATER STATION AMPLIFIER OPTIONS, CON'T		EPL	LIST
---	--	------------	-------------

Note: Includes One Cable for Radio Connectivity.

KSGPA22442	144-152MHz, 3W Input, 150W Output	2295.00	3060.00
KSGPA22443	152-162MHz, 3W Input, 150W Output	2295.00	3060.00
KSGPA22444	162-174MHz, 3W Input, 150W Output	2295.00	3060.00
KSGPA22253	152-162MHz, 3W Input, 250W Output	3045.00	4060.00
KSGPA22503	136-174MHz, 25W Input, 25-50W Output	1248.75	1665.00
KSGPA22512	144-152MHz, 25W Input, 55-110W Output	1620.00	2160.00
KSGPA22513	152-162MHz, 25W Input, 55-110W Output	1620.00	2160.00
KSGPA22514	162-174MHz, 25W Input, 55-110W Output	1620.00	2160.00
KSGPA22542	144-152MHz, 25W Input, 150W Output	2295.00	3060.00
KSGPA22543	152-162MHz, 25W Input, 150W Output	2295.00	3060.00
KSGPA22544	162-174MHz, 25W Input, 150W Output	2295.00	3060.00

POWER SUPPLY OPTIONS		EPL	LIST
-----------------------------	--	------------	-------------

KSGPS20400	40A, 13.8VDC, 19" Wide Rack-Mounted Power Supply Note: Incompatible with 150W or 250W amplifier option.	356.25	475.00
KSGPS20352	35A, 13.8VDC, 19" Wide Rack-Mounted Power Supply with SmartCharger Note: Incompatible with 150W or 250W amplifier option.	1016.25	1355.00
KSGPS20701	70A, 13.8VDC, 19" Wide Rack-Mounted Power Supply	1016.25	1355.00
KSGPS20702	70A, 13.8VDC, 19" Wide Rack-Mounted Power Supply with SmartCharger	1305.00	1740.00

MOUNTING CONFIGURATIONS		EPL	LIST
--------------------------------	--	------------	-------------

KSGMRCK3	3' (17RU) Aluminum Equipment Rack with Crate (KSGMT13000, KSGMT0C03R)	810.00	1080.00
KSGMRCK7	7' (45RU) Aluminum Equipment Rack with Crate (KSGMT17000, KSGMT0C07R)	900.00	1200.00
KSGMCAB4	77" (40RU) Locking Cabinet with Crate (KSGMT20040, KSGMT0C40U)	2006.25	2675.00
KSGMT20020	42" (20RU) Locking Cabinet	1500.00	2000.00
KSGMT0C20U	Crate for 42" (20RU) Locking Cabinet Note: Optional for situations where extra protection during transportation is required.	258.75	345.00
KSGMT20001	Cabinet Solid Top Panel	67.50	90.00
KSGMT20002	Cabinet Fan Top Assembly	326.25	435.00
KSGMT20003	Cabinet Solid Floor Panel (includes five pre-drilled openings and grommets)	105.00	140.00

WIRESLINE REMOTE CONTROL OPTIONS		EPL	LIST
KSGTN02A	2 Channel Tone Termination Panel (KSGTM10012, KSGTM10TCS, KSGCB32801) Note: 2 or 4 wire, 600-Ohm balanced audio with monitor.	491.25	655.00
KSGTN02N	N-Series 2 Channel Tone Termination Panel (KSGTM10060, KSGTM20TCS, KSGCB32801) Note: 2 or 4 wire, 600-Ohm balanced audio with monitor and automatic line leveling.	502.50	670.00
KSGTM20016	16 Channel Tone Termination Panel Note: 2 or 4 wire, 600-Ohm balanced audio with monitor.	711.56	948.75
KSGTDC2A	DC Termination Panel (KSGTM10003, KSGTM10TCS, KSGCB32801) Note: 2 or 4 wire, 600-Ohm balanced audio with monitor. Specify DC current settings at time of order.	307.50	410.00
KSGTALD1	600 Ohm Line Driver (KSGTM10021, KSGTM10TCS, KSGCB32801) Note: 1 channel receive audio line driver panel, 2 wire, 600Ohm balanced output. May also be configured to support 4-wire E&M interface applications.	270.00	360.00

Gen1 TRUNKING CONFIGURATIONS		EPL	LIST
KSGPG91800	Repeater Trunking Feature Note: One Feature required for each trunking repeater.	1125.00	1500.00
KSGPG91810	Multi-Site Networking Feature Note: One required for each networked site.	8750.25	11667.00

Gen1 TRUNKING CONFIGURATIONS, CON'T		EPL	LIST
KSGPGKEYSM	System Manager Software and Secure USB Key Package (KPG-110SMK, KSGPGKEY01) Note: Only required when used as a trunking system. Software/Key package discount has been applied. (See component pricing below.)	437.25	583.00
KPG-110SMK	System Manager Trunking Software Note: Additional Programming Software (One copy included with KSGPGKEYSM) Software cannot be opened without a valid KSGPGKEY01 or KSGPGKEY02 secure USB key..	344.25	459.00
KSGPGKEY01	Grade-1 Unlimited Access Secure USB Programming Key	125.25	167.00
KSGPGKEY02	Grade-2 Limited Access Secure USB Programming Key	125.25	167.00
USB KEY FUNCTION OR CAPABILITY		GRADE-1 (BLUE)	GRADE-2 (YELLOW)
PROGRAM GENERAL SYSTEM PARAMETERS		√	√
ADD / DELETE / EDIT USERS. TALKGROUPS, CLASSES OF SERVICE, ECT.		√	√
ASSIGN OR EDIT REPEATER NETWORK IP ADDRESSES		√	
ADD NEW REPEATER CHANNEL(S)		√	
SWAP OUT SPARE REPEATERS		√	
CONSTRUCT OR ADD NEW SITES		√	

Gen2 TRUNKING CONFIGURATIONS		EPL	LIST
-------------------------------------	--	------------	-------------

[Please see the NEXEDGE Gen2 Page.](#)

ETHERNET SWITCH & ROUTER OPTIONS		EPL	LIST
---	--	------------	-------------

Note: One switch is required for each site; VPN router(s) may be required for multi-site systems depending on desired configuration. When needed, VPN router(s) are required in addition to and in conjunction with network switch equipment. Multicast Router options are also available.

KSGNS10008	8-Port Managed Network Switch Note: 1RU Mounting Tray (KSGUT10001) sold separately.	187.50	250.00
KSGNS10024	Rack Mounted 24-Port Managed Network Switch	281.25	375.00
KSGRT10004	4-Port Managed VPN Router Note: 1RU Mounting Tray (KSGUT10001) sold separately.	281.25	375.00

EXTERNAL TRUNKING CONTROLLER OPTIONS		EPL	LIST
KSGC452L	LTR Dispatch Trunking Controller (901-9570, KSGCB32801)	1158.75	1545.00
KSGC459L	LTR Dispatch & Interconnect Trunking Controller (905-0123, KSGCB32801)	1777.50	2370.00

MISC STATION OPTIONS		EPL	LIST
KSGDX12556	6 Cavity VHF BpBr Duplexer Note: Bandpass/Bandreject duplexer, 350W continuous duty, minimum TX-RX 400 KHz. Includes one LMR-400 interface cable.	2321.25	3095.00
KSGOMOD1	Basic Site Management Modem (KSGMD10001, KSGCB22154) Note: Modem 2400 bps to be used with LTR controllers, includes interface cable.	191.25	255.00
KSGOMOD2	High Performance Site Management Modem (KSGMD20000, KSGCB22154) Note: Modem 2400 bps, extra stability in high RF environments, includes interface cable.	911.25	1215.00
KSGSNV12	Signal-to-Noise Modular Voting Comparator Note: 19" rack mount; occupies 3RU. Order Station Module Cards below.	6000.00	8000.00
KSGVOT2A	Station Module Card for Signal-to-Noise Voter (SVM-2)	1147.50	1530.00
KSGOPTG1	Pilot Tone Generator and Line Driver (PTG-10) Note: For use with voting systems, supplies 600 Ohm balanced 2-wire audio.	663.75	885.00
COMPONENTS		EPL	LIST
KSGMT13000	Rack, Equipment, 3' Tall, 19 Inches Wide	540.00	720.00
KSGMT0C03R	Crate for 3' Rack	270.00	360.00
KSGMT17000	Rack, Equipment, 7' Tall, 19 Inches Wide	487.50	650.00
KSGMT0C07R	Crate for 7' Rack	412.50	550.00
COMPONENTS, CON'T		EPL	LIST
KSGMT20040	Cabinet, 40U w/Hardware Kit Pre-Punched Pontoon Base	1616.25	2155.00
KSGMT0C40U	Crate for 40U Cabinet	390.00	520.00
KSGTM10012	Panel, Tone Term, 2 ch., no case, full dup, 2 or 4 wire, w/monitor	420.00	560.00
KSGTM10TCS	Case, Tone Term Panel	48.75	65.00
KSGCB32801	Cable, Interface, Tone to '50	22.50	30.00
KSGCB20112	Coaxial BNC 12" Canble	21.00	28.00
KSGTM10060	Panel, Tone Term (N-Series), 2 ch., no case, full dup, 2 or 4 wire, w/monitor	427.50	570.00
KSGTM20TCS	Case, Tone Term Panel (N-Series)	52.50	70.00
KSGTM10003	Term panel, DC, 2ch, 2/4-wire, full duplex	236.25	315.00
KSGTM10021	600 Ohm Balanced Line Driver	198.75	265.00
KSGCB30532	Cable, 32", DB-25 Male (Controller) to DB-25 Male(Repeater)	30.00	40.00
901-9570	Controller, Dispatch Trunking (Zetron Model 452)	1136.25	1515.00
905-0123	Controller, Dispatch Trunking with Interconnect (Zetron Model 459)	1755.00	2340.00
KSGMD10001	Modem, USR	161.25	215.00
KSGCB22154	Cable,54",DB-9 Female (Controller) to DB-25 Male(Modem)	30.00	40.00
KSGMD20000	Modem, Tuff, with power cable and interface cable	881.25	1175.00
KSGUT10001	1RU Mounting Tray Note: Provides mounting space for up to two accessories.	37.50	50.00

NXR-5800

UHF Digital & FM Base Repeaters - 400-520MHz



GENERAL:

- Conventional / Conventional IP Network
- NEXEDGE Gen1 Network
- NEXEDGE Gen2 Network
- Occupies 1 RU
- Wideband Coverage
- 25/5/0.5 W RF Output Power
- Operates in analog mode at 25 KHz or 12.5 KHz, or in digital mode at 12.5 KHz or 6.25 KHz.
- Built-in 0.5 ppm TCXO
- LED Status Indicators
- USB 2.0 Type-B Interface
- Programming information is required to properly configure each system. Please contact your Kenwood Systems Regional Manager for assistance.

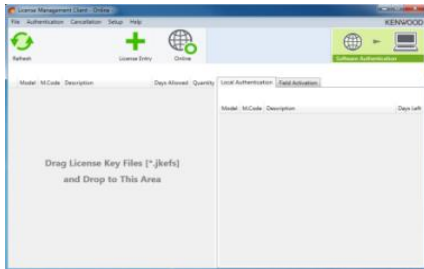
GENERAL OPTIONS:

- External amplifier with built-in T/R antenna switching for simplex operation
- Wire line remote control
- Power supply options such as integrated SmartCharger and Low Voltage Disconnect for battery backup applications.
- High performance 6 cavity BpBr duplexer is available
- Multi-channel combining systems quoted on an individual system basis
- Mounting options include 20 RU (42") and 40 RU (77") locking cabinets in addition to 17 RU (3') and 45 RU (7') open equipment racks.
- Amplifier choices include 50W, 110W, 150W or 250W options.
- Custom configurations are available; contact your Kenwood Systems Regional Sales Manager for details.

TRUNKING OPTIONS

- Enabling of Trunking feature
- Secondary, restricted-level service keys for management of less critical system parameters available. Each trunking system requires an Ethernet switch per site. Routers are optional for a single-site system but required for multi-site systems.
- System switches and routers are recommended, but most commercially available network equipment is compatible.

NXR-5800 REPEATER		EPL	LIST
NXR-5800K	Repeater, Digital, UHF, 450-520MHz, 25W, 0.5ppm TCXO built-in	3999.75	5333.00
NXR-5800K3	Repeater, Digital, UHF, 400-470MHz, 25W, 0.5ppm TCXO built-in	3999.75	5333.00



Note: KPT-300LMC is compatible with Windows Vista/7/8/8.1 Only. Windows XP is not supported.



**KPT-300LMC
License Management Client**

KPT-300LMC is a required software package that is used to authenticate **software**

KPT-300LMC is available as a free download from Kenwood Tools and is also supplied with applicable software.

NOTE: A license key is required for the KPT-300LMC to authenticate the software prior to use. To receive a license key, complete the "Account Request Form" and return to the Kenwood Systems Order Desk.

License Keys will be E-Mailed to the address provided on the Account Request Form. A hard copy will follow by mail for your records.

KPT-300LMC	License Management Client	NC	NC
L-5000	Account Registration Key Note: specify the number of PC's used for Radio Feature License Activation.	NC	NC

SOFTWARE LICENSE OPTIONS **EPL** **LIST**

TO PLACE AN ORDER FOR SOFTWARE:

1. Complete the attached Software License Key Request Form.
2. Submit along with your PO to the SYSTEMS Order Desk via:
 - a) E-Mail: systemsorderdesk@us.jvckenwood.com
 - b) Fax: (678) 957-1880
3. License Keys will be E-mailed to the address provided on the order form. A hard copy will follow by mail for your records.

Software License Key Discount Structure

1 License Key	---
2 ~ 4 License Keys	10% OFF
5 ~ 14 License Keys	35% OFF
15 ~ 24 License Keys	40% OFF

SOFTWARE LICENSE OPTIONS		EPL	LIST
KPG-D2NK	License Key for KPG-D2NK Programming Software for NXR-5000 Repeater (Windows® Vista/7/8/8.1) Note: - Requires KPT-300LMC for authentication. - To program NXR-5000, Type A/B USB Cable (KSGCB10206) may be required.	77.44	103.25

RADIO FEATURE LICENSE OPTIONS

PCs registered under the same KPT-300LMC Account Registration Key (License Key) will be able to authentic Radio Features that can then be viewed / shared / managed by all registered users for the account.

*** TO PLACE AN ORDER FOR RADIO FEATURE LICENSES:**

1. Complete the attached Radio Feature Request Form.
2. Submit along with your PO to the SYSTEMS Order Desk via:
 - a) E-Mail: systemsorderdesk@us.jvckenwood.com
 - b) Fax: (678) 957-1880
3. License Keys will be E-mailed to the address provided on the request form. A hard copy will follow by mail for your records.

Note: Radio Feature License Keys can be transferable from a radio to radio within 72 hours count started from being authenticated to a Radio. Once license transferred radio is authenticated by KPT-300LMC, 72 hours is reset and count started from first.

KWD-NX50VTR	License Key for NXR-5000 Vote System	375.00	500.00
-------------	--------------------------------------	--------	--------

BASIC ACCESSORIES		EPL	LIST
KXK-3M3	6.25KHz "Very Narrow Band" Option High Stability Reference Oscillator	2499.75	3333.00
KPG-149RM	Nexedge Repeater Monitoring Software	187.50	250.00
KSGCB10206	Programming USB A/B Cable	12.75	17.00
B5B-7217-10	NXR-5800 Service Manual	37.50	50.00

RF BASE STATION AMPLIFIER OPTIONS

Note: Includes Two Cables for Radio Connectivity.

		EPL	LIST
KSGPA23421	406-450MHz, 3W Input, 20-40W Output	1492.50	1990.00
KSGPA23423	450-512MHz, 3W Input, 20-40W Output	1492.50	1990.00
KSGPA23400	406-450MHz, 3W Input, 50-100W Output	1950.00	2600.00
KSGPA23420	450-512MHz, 3W Input, 50-100W Output	1950.00	2600.00
KSGPA23451	406-450MHz, 3W Input, 150W Output	3420.00	4560.00
KSGPA23453	450-512MHz, 3W Input, 150W Output	3420.00	4560.00
KSGPA23521	406-450MHz, 25W Input, 20-40W Output	1462.50	1950.00
KSGPA23523	450-512MHz, 25W Input, 20-40W Output	1462.50	1950.00
KSGPA23500	406-450MHz, 25W Input, 50-100W Output	1950.00	2600.00
KSGPA23520	450-512MHz, 25W Input, 50-100W Output	1950.00	2600.00

KSGPA23551	406-450MHz, 25W Input, 150W Output	3420.00	4560.00
KSGPA23553	450-512MHz, 25W Input, 150W Output	3420.00	4560.00
RF REPEATER STATION AMPLIFIER OPTIONS		EPL	LIST
Note: Includes One Cable for Radio Connectivity.			
KSGPA23401	406-450MHz, 3W Input, 20-40W Output	1248.75	1665.00
KSGPA23403	450-512MHz, 3W Input, 20-40W Output	1248.75	1665.00
KSGPA23411	406-450MHz, 3W Input, 50-100W Output	1623.75	2165.00
KSGPA23413	450-512MHz, 3W Input, 50-100W Output	1623.75	2165.00
KSGPA23441	406-450MHz, 3W Input, 150W Output	2955.00	3940.00
KSGPA23443	450-512MHz, 3W Input, 150W Output	2955.00	3940.00
KSGPA23501	406-450MHz, 25W Input, 20-40W Output	1248.75	1665.00
KSGPA23503	450-512MHz, 25W Input, 20-40W Output	1248.75	1665.00
KSGPA23511	406-450MHz, 25W Input, 50-100W Output	1623.75	2165.00
KSGPA23513	450-512MHz, 25W Input, 50-100W Output	1623.75	2165.00
KSGPA23541	406-450MHz, 25W Input, 150W Output	2955.00	3940.00
KSGPA23543	450-512MHz, 25W Input, 150W Output	2955.00	3940.00
POWER SUPPLY OPTIONS		EPL	LIST
KSGPS20400	40A, 13.8VDC, 19" Wide Rack-Mounted Power Supply Note: Incompatible with 150W amplifier option.	356.25	475.00
KSGPS20352	35A, 13.8VDC, 19" Wide Rack-Mounted Power Supply with SmartCharger Note: Incompatible with 150W amplifier option.	1016.25	1355.00
KSGPS20701	70A, 13.8VDC, 19" Wide Rack-Mounted Power Supply	1016.25	1355.00
KSGPS20702	70A, 13.8VDC, 19" Wide Rack-Mounted Power Supply with SmartCharger	1305.00	1740.00
MOUNTING CONFIGURATIONS		EPL	LIST
KSGMRCK3	3' (17RU) Aluminum Equipment Rack with Crate (KSGMT13000, KSGMT0C03R)	810.00	1080.00
KSGMRCK7	7' (45RU) Aluminum Equipment Rack with Crate (KSGMT17000, KSGMT0C07R)	900.00	1200.00
KSGMCAB4	77" (40RU) Locking Cabinet with Crate (KSGMT20040, KSGMT0C40U)	2006.25	2675.00
KSGMT20020	42" (20RU) Locking Cabinet	1500.00	2000.00
KSGMT0C20U	Crate for 42" (20RU) Locking Cabinet Note: Optional for situations where extra protection during transportation is required.	258.75	345.00
KSGMT20001	Cabinet Solid Top Panel	67.50	90.00
KSGMT20002	Cabinet Fan Top Assembly	326.25	435.00
KSGMT20003	Cabinet Solid Floor Panel (includes five pre-drilled openings and grommets)	105.00	140.00
WIRELINER REMOTE CONTROL OPTIONS		EPL	LIST
KSGTN02A	2 Channel Tone Termination Panel (KSGTM10012, KSGTM10TCS, KSGCB32801) Note: 2 or 4 wire, 600-Ohm balanced audio with monitor.	491.25	655.00
KSGTN02N	N-Series 2 Channel Tone Termination Panel (KSGTM10060, KSGTM20TCS, KSGCB32801) Note: 2 or 4 wire, 600-Ohm balanced audio with monitor and automatic line leveling.	502.50	670.00
KSGTM20016	16 Channel Tone Termination Panel Note: 2 or 4 wire, 600-Ohm balanced audio with monitor.	711.56	948.75
KSGTDC2A	DC Termination Panel (KSGTM10003, KSGTM10TCS, KSGCB32801) Note: 2 or 4 wire, 600-Ohm balanced audio with monitor. Specify DC current settings at time of order.	307.50	410.00
KSGTALD1	600 Ohm Line Driver (KSGTM10021, KSGTM10TCS, KSGCB32801) Note: 1 channel receive audio line driver panel, 2 wire, 600Ohm balanced output. May also be configured to support 4-wire E&M interface applications.	270.00	360.00
Gen1 TRUNKING CONFIGURATIONS		EPL	LIST
KSGPG91800	Repeater Trunking Feature Note: One Feature required for each trunking repeater.	1125.00	1500.00

KSGPG91810	Multi-Site Networking Feature Note: One required for each networked site.	8750.25	11667.00
KSGPGKEYSM	System Manager Software and Secure USB Key Package (KPG-110SMK, KSGPGKEY01) Note: Only required when used as a trunking system. Software/Key package discount has been applied. (See component pricing below.)	437.25	583.00
KPG-110SMK	System Manager Trunking Software Note: Additional Programming Software (One copy included with KSGPGKEYSM) Software cannot be opened without a valid KSGPGKEY01 or KSGPGKEY02 secure USB key..	344.25	459.00
KSGPGKEY01	Grade-1 Unlimited Access Secure USB Programming Key	125.25	167.00
KSGPGKEY02	Grade-2 Limited Access Secure USB Programming Key	125.25	167.00

USB KEY FUNCTION OR CAPABILITY	GRADE-1 (BLUE)	GRADE-2 (YELLOW)
PROGRAM GENERAL SYSTEM PARAMETERS	√	√
ADD / DELETE / EDIT USERS. TALKGROUPS, CLASSES OF SERVICE, ECT.	√	√
ASSIGN OR EDIT REPEATER NETWORK IP ADDRESSES	√	
ADD NEW REPEATER CHANNEL(S)	√	
SWAP OUT SPARE REPEATERS	√	
CONSTRUCT OR ADD NEW SITES	√	

Gen2 TRUNKING CONFIGURATIONS **EPL LIST**

[Please see the NEXEDGE Gen2 Page.](#)

ETHERNET SWITCH & ROUTER OPTIONS **EPL LIST**

Note: One switch is required for each site; VPN router(s) may be required for multi-site systems depending on desired configuration. When needed, VPN router(s) are required in addition to and in conjunction with network switch equipment. Multicast Router options are also available.

KSGNS10008	8-Port Managed Network Switch Note: 1RU Mounting Tray (KSGUT10001) sold separately.	187.50	250.00
KSGNS10024	Rack Mounted 24-Port Managed Network Switch	281.25	375.00
KSGRT10004	4-Port Managed VPN Router Note: 1RU Mounting Tray (KSGUT1000) sold separately.	281.25	375.00

EXTERNAL TRUNKING CONTROLLER OPTIONS **EPL LIST**

KSGC452L	LTR Dispatch Trunking Controller (901-9570, KSGCB32801)	1158.75	1545.00
KSGC459L	LTR Dispatch & Interconnect Trunking Controller (905-0123, KSGCB32801)	1777.50	2370.00

MISC STATION OPTIONS **EPL LIST**

KSGDX13546	6 Cavity UHF BpBr Duplexer (450-470MHz Only) Note: Bandpass/Bandreject duplexer, 250W continuous duty. Includes one LMR-400 interface cable.	2321.25	3095.00
KSGDX23101	4 Cavity UHF BpBr Duplexer (450-470MHz Only) Note: Bandpass/Bandreject duplexer, 350W continuous duty. Includes one LMR-400 interface cable.	1331.25	1775.00
KSGOMOD1	Basic Site Management Modem (KSGMD10001, KSGCB22154) Note: Modem 2400 bps to be used with LTR controllers, includes interface cable.	191.25	255.00
KSGOMOD2	High Performance Site Management Modem (KSGMD20000, KSGCB22154) Note: Modem 2400 bps, extra stability in high RF environments, includes interface cable.	911.25	1215.00
KSGSNV12	Signal-to-Noise Modular Voting Comparator Note: 19" rack mount; occupies 3RU. Order Station Module Cards below.	6000.00	8000.00
KSGVOT2A	Station Module Card for Signal-to-Noise Voter (SVM-2)	1147.50	1530.00
KSGOPTG1	Pilot Tone Generator and Line Driver (PTG-10) Note: For use with voting systems, supplies 600 Ohm balanced 2-wire audio.	663.75	885.00

COMPONENTS **EPL LIST**

KSGMT13000	Rack, Equipment, 3' Tall, 19 Inches Wide	540.00	720.00
KSGMT0C03R	Crate for 3' Rack	270.00	360.00

KSGMT17000	Rack, Equipment, 7' Tall, 19 Inches Wide	487.50	650.00
KSGMT0C07R	Crate for 7' Rack	412.50	550.00
KSGMT20040	Cabinet, 40U w/Hardware Kit Pre-Punched Pontoon Base	1616.25	2155.00
KSGMT0C40U	Crate for 40U Cabinet	390.00	520.00
KSGTM10012	Panel, Tone Term, 2 ch., no case, full dup, 2 or 4 wire, w/monitor	420.00	560.00
KSGTM10TCS	Case, Tone Term Panel	48.75	65.00
KSGCB32801	Cable, Interface, Tone to '50	22.50	30.00
KSGCB20112	Coaxial BNC 12" Canble	21.00	28.00
KSGTM10060	Panel, Tone Term (N-Series), 2 ch., no case, full dup, 2 or 4 wire, w/monitor	427.50	570.00
KSGTM20TCS	Case, Tone Term Panel (N-Series)	52.50	70.00
KSGTM10003	Term panel, DC, 2ch, 2/4-wire, full duplex	236.25	315.00
KSGTM10021	600 Ohm Balanced Line Driver	198.75	265.00
KSGCB30532	Cable, 32", DB-25 Male (Controller) to DB-25 Male(Repeater)	30.00	40.00
901-9570	Controller, Dispatch Trunking (Zetron Model 452)	1136.25	1515.00
905-0123	Controller, Dispatch Trunking with Interconnect (Zetron Model 459)	1755.00	2340.00
KSGMD10001	Modem, USR	161.25	215.00
KSGCB22154	Cable,54",DB-9 Female (Controller) to DB-25 Male(Modem)	30.00	40.00
COMPONENTS, CON'T		EPL	LIST
KSGMD20000	Modem, Tuff, with power cable and interface cable	881.25	1175.00
KSGUT10001	1RU Mounting Tray Note: Provides mounting space for up to two accessories.	37.50	50.00

NXR-5900

800MHz Digital & FM Base Repeaters - 806-825, 851-870 MHz



GENERAL:

- Conventional / Conventional IP Network
- NEXEDGE Gen1 Network
- NEXEDGE Gen2 Network *
- Occupies 1 RU
- Wideband Coverage
- 0.36 W RF Output Power
- Operates in analog mode at 25 KHz or 12.5 KHz, or in digital mode at 12.5 KHz or 6.25 KHz.
- Built-in 0.5 ppm TCXO
- LED Status Indicators
- USB 2.0 Type-B Interface
- Programming information is required to properly configure each system. Please contact your Kenwood Systems Regional Manager for assistance.

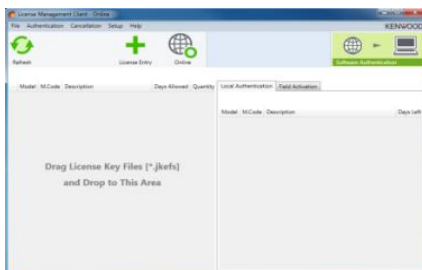
GENERAL OPTIONS:

- External amplifier with built-in T/R antenna switching for simplex operation
- Wire line remote control
- Power supply options such as integrated SmartCharger and Low Voltage Disconnect for battery backup applications.
- High performance 6 cavity BpBr duplexer is available
- Multi-channel combining systems quoted on an individual system basis
- Mounting options include 20 RU (42") and 40 RU (77") locking cabinets in addition to 17 RU (3') and 45 RU (7") open equipment racks.
- Amplifier choices include 75W and 130W options.
- Custom configurations are available; contact your Kenwood Systems Regional Sales Manager for details.

TRUNKING OPTIONS

- Enabling of Trunking feature
- Secondary, restricted-level service keys for management of less critical system parameters available. Each trunking system requires an Ethernet switch per site. Routers are optional for a single-site system but required for multi-site systems.
- System switches and routers are recommended, but most commercially available network equipment is compatible.

NXR-5900 REPEATER	EPL	LIST
NXR-5900K Repeater, Digital, RX 806-825 MHz, TX 821-870 MHz	4,312.50	5,750.00



KPT-300LMC
License Management Client

KPT-300LMC is a required software package that is used to authenticate **software**

KPT-300LMC is available as a free download from Kenwood Tools and is also supplied with applicable software.

NOTE: A license key is required for the KPT-300LMC to authenticate the software prior to use. To receive a license key, complete the "[Account Request Form](#)" and return to the Kenwood Systems Order Desk.

Note: KPT-300LMC is compatible with Windows Vista/7/8/8.1 Only. Windows XP is not supported.

License Keys will be E-Mailed to the address provided on the Account Request Form. A hard copy will follow by mail for your records.

KPT-300LMC	License Management Client	NC	NC
L-5000	Account Registration Key Note: specify the number of PC's used for Radio Feature License Activation.	NC	NC

SOFTWARE LICENSE OPTIONS **EPL** **LIST**

TO PLACE AN ORDER FOR SOFTWARE:

1. Complete the attached Software License Key Request Form.
2. Submit along with your PO to the SYSTEMS Order Desk via:
 - a) E-Mail: systemsorderdesk@us.jvckenwood.com
 - b) Fax: (678) 957-1880
3. License Keys will be E-mailed to the address provided on the order form. A hard copy will follow by mail for your records.

Software License Key Discount Structure

1 License Key	---
2 ~ 4 License Keys	10% OFF
5 ~ 14 License Keys	35% OFF
15 ~ 24 License Keys	40% OFF

SOFTWARE LICENSE OPTIONS		EPL	LIST
KPG-D2NK	License Key for KPG-D2NK Programming Software for NXR-5000 Repeater (Windows® Vista/7/8/8.1) Note: - Requires KPT-300LMC for authentication. - To program NXR-5000, Type A/B USB Cable (KSGCB10206) may be required.	77.49	103.25

RADIO FEATURE LICENSE OPTIONS

PCs registered under the same KPT-300LMC Account Registration Key (License Key) will be able to authentic Radio Features that can then be viewed / shared / managed by all registered users for the account.

*** TO PLACE AN ORDER FOR RADIO FEATURE LICENSES:**

1. Complete the attached Radio Feature Request Form.
2. Submit along with your PO to the SYSTEMS Order Desk via:
 - a) E-Mail: systemsorderdesk@us.jvckenwood.com
 - b) Fax: (678) 957-1880
3. License Keys will be E-mailed to the address provided on the request form. A hard copy will follow by mail for your records.

Note: Radio Feature License Keys can be transferable from a radio to radio within 72 hours count started from being authenticated to a Radio. Once license transferred radio is authenticated by KPT-300LMC, 72 hours is reset and count started from first.

KWD-NX50VTR	License Key for NXR-5000 Vote System	300.00	500.00
-------------	--------------------------------------	--------	--------

BASIC ACCESSORIES		EPL	LIST
KXK-3M3	6.25KHz "Very Narrow Band" Option High Stability Reference Oscillator Note: Only one KXK-3M3 required per site for 6.25KHz operation.	1,999.80	3,333.00
KPG-149RM	Nexedge Repeater Monitoring Software	150.00	250.00
KSGCB10206	Programming USB A/B Cable	10.20	17.00
B5B-7278-00	NXR-5900 Service Manual	30.00	50.00

RF REPEATER STATION AMPLIFIER OPTIONS

Note: Includes One Cable for Radio Connectivity.

KSGPA24181	764-870MHz, 250mW Input, 75W Output	2,175.00	2,900.00
KSGPA24131	764-870MHz, 250mW Input, 130W Output	2,872.50	3,830.00

POWER SUPPLY OPTIONS

		EPL	LIST
KSGPS20400	40A, 13.8VDC, 19" Wide Rack-Mounted Power Supply Note: Incompatible with 130W amplifier option.	356.25	475.00
KSGPS20352	35A, 13.8VDC, 19" Wide Rack-Mounted Power Supply with SmartCharger Note: Incompatible with 130W amplifier option.	1,016.25	1,355.00
KSGPS20701	70A, 13.8VDC, 19" Wide Rack-Mounted Power Supply	1,016.25	1,355.00
KSGPS20702	70A, 13.8VDC, 19" Wide Rack-Mounted Power Supply with SmartCharger	1,305.00	1,740.00

MOUNTING CONFIGURATIONS

		EPL	LIST
KSGMRCK3	3' (17RU) Aluminum Equipment Rack with Crate (KSGMT13000, KSGMT0C03R)	810.00	1,080.00
KSGMRCK7	7' (45RU) Aluminum Equipment Rack with Crate (KSGMT17000, KSGMT0C07R)	900.00	1,200.00
KSGMCAB4	77" (40RU) Locking Cabinet with Crate (KSGMT20040, KSGMT0C40U)	2,006.25	2,675.00
KSGMT20020	42" (20RU) Locking Cabinet	1,500.00	2,000.00

KSGMT0C20U	Crate for 42" (20RU) Locking Cabinet Note: Optional for situations where extra protection during transportation is required.	258.75	345.00
KSGMT20001	Cabinet Solid Top Panel	67.50	90.00
KSGMT20002	Cabinet Fan Top Assembly	326.25	435.00
KSGMT20003	Cabinet Solid Floor Panel (includes five pre-drilled openings and grommets)	105.00	140.00
WIRELINEREMOTE CONTROL OPTIONS		EPL	LIST
KSGTN02A	2 Channel Tone Termination Panel (KSGTM10012, KSGTM10TCS, KSGCB32801) Note: 2 or 4 wire, 600-Ohm balanced audio with monitor.	491.25	655.00
KSGTN02N	N-Series 2 Channel Tone Termination Panel (KSGTM10060, KSGTM20TCS, KSGCB32801) Note: 2 or 4 wire, 600-Ohm balanced audio with monitor and automatic line leveling.	502.50	670.00
KSGTDC2A	DC Termination Panel (KSGTM10003, KSGTM10TCS, KSGCB32801) Note: 2 or 4 wire, 600-Ohm balanced audio with monitor. Specify DC current settings at time of order.	307.50	410.00
KSGTALD1	600 Ohm Line Driver (KSGTM10021, KSGTM10TCS, KSGCB32801) Note: 1 channel receive audio line driver panel, 2 wire, 600Ohm balanced output. May also be configured to support 4-wire E&M interface applications.	270.00	360.00
Gen1 TRUNKING CONFIGURATIONS		EPL	LIST
KSGPG91800	Repeater Trunking Feature Note: One Feature required for each trunking repeater.	1,125.00	1,500.00
KSGPG91810	Multi-Site Networking Feature Note: One required for each networked site.	8,750.25	11,667.00
KSGPGKEYSM	System Manager Software and Secure USB Key Package (KPG-110SMK, KSGPGKEY01) Note: Only required when used as a trunking system. Software/Key package discount has been applied. (See component pricing below.)	437.25	583.00
KPG-110SMK	System Manager Trunking Software Note: Additional Programming Software (One copy included with KSGPGKEYSM) Software cannot be opened without a valid KSGPGKEY01 or KSGPGKEY02 secure USB key..	344.25	459.00
KSGPGKEY01	Grade-1 Unlimited Access Secure USB Programming Key	125.25	167.00
KSGPGKEY02	Grade-2 Limited Access Secure USB Programming Key	125.25	167.00
USB KEY FUNCTION OR CAPABILITY		GRADE-1 (BLUE)	GRADE-2 (YELLOW)
PROGRAM GENERAL SYSTEM PARAMETERS		√	√
ADD / DELETE / EDIT USERS. TALKGROUPS, CLASSES OF SERVICE, ECT.		√	√
ASSIGN OR EDIT REPEATER NETWORK IP ADDRESSES		√	
ADD NEW REPEATER CHANNEL(S)		√	
SWAP OUT SPARE REPEATERS		√	
CONSTRUCT OR ADD NEW SITES		√	
Gen2 TRUNKING CONFIGURATIONS		EPL	LIST
Please see the NEXEDGE Gen2 Page.			
ETHERNET SWITCH & ROUTER OPTIONS		EPL	LIST
Note: One switch is required for each site; VPN router(s) may be required for multi-site systems depending on desired configuration. When needed, VPN router(s) are required in addition to and in conjunction with network switch equipment.			
KSGNS10008	8-Port Managed Network Switch Note: 1RU Mounting Tray (KSGUT10001) sold separately.	187.50	250.00
KSGNS10024	Rack Mounted 24-Port Managed Network Switch	281.25	375.00
KSGRT10004	4-Port Managed VPN Router Note: 1RU Mounting Tray (KSGUT1000) sold separately.	281.25	375.00
EXTERNAL TRUNKING CONTROLLER OPTIONS		EPL	LIST
KSGC452L	LTR Dispatch Trunking Controller (901-9570, KSGCB32801)	1,158.75	1,545.00
KSGC459L	LTR Dispatch & Interconnect Trunking Controller (905-0123, KSGCB32801)	1,777.50	2,370.00
MISC STATION OPTIONS		EPL	LIST

KSGDX14644	4 Cavity 800MHz BpBr Duplexer Note: Bandpass/Bandreject duplexer, 250W continuous duty, minimum TX-RX 5MHz. Includes RF cables, mounting and tuning. Includes one LMR-400 interface cable.	1,743.75	2,325.00
KSGOMOD1	Basic Site Management Modem (KSGMD10001, KSGCB22154) Note: Modem 2400 bps to be used with LTR controllers, includes interface cable.	191.25	255.00
KSGOMOD2	High Performance Site Management Modem (KSGMD20000, KSGCB22154) Note: Modem 2400 bps, extra stability in high RF environments, includes interface cable.	911.25	1,215.00
KSGSNV12	Signal-to-Noise Modular Voting Comparator Note: 19" rack mount; occupies 3RU. Order Station Module Cards below.	6,000.00	8,000.00
KSGVOT2A	Station Module Card for Signal-to-Noise Voter (SVM-2)	1,147.50	1,530.00
KSGOPTG1	Pilot Tone Generator and Line Driver (PTG-10) Note: For use with voting systems, supplies 600 Ohm balanced 2-wire audio.	663.75	885.00
COMPONENTS		EPL	LIST
KSGMT13000	Rack, Equipment, 3' Tall, 19 Inches Wide	540.00	720.00
KSGMT0C03R	Crate for 3' Rack	270.00	360.00
KSGMT17000	Rack, Equipment, 7' Tall, 19 Inches Wide	487.50	650.00
KSGMT0C07R	Crate for 7' Rack	412.50	550.00
KSGMT20040	Cabinet, 40U w/Hardware Kit Pre-Punched Pontoon Base	1,616.25	2,155.00
KSGMT0C40U	Crate for 40U Cabinet	390.00	520.00
KSGTM10012	Panel, Tone Term, 2 ch., no case, full dup, 2 or 4 wire, w/monitor	420.00	560.00
KSGTM10TCS	Case, Tone Term Panel	48.75	65.00
KSGCB32801	Cable, Interface, Tone to '50	22.50	30.00
KSGTM10060	Panel, Tone Term (N-Series), 2 ch., no case, full dup, 2 or 4 wire, w/monitor	427.50	570.00
KSGTM20TCS	Case, Tone Term Panel (N-Series)	52.50	70.00
KSGTM10003	Term panel, DC, 2ch, 2/4-wire, full duplex	236.25	315.00
KSGTM10021	600 Ohm Balanced Line Driver	198.75	265.00
KSGCB30532	Cable, 32", DB-25 Male (Controller) to DB-25 Male(Repeater)	30.00	40.00
901-9570	Controller, Dispatch Trunking (Zetron Model 452)	1,136.25	1,515.00
905-0123	Controller, Dispatch Trunking with Interconnect (Zetron Model 459)	1,755.00	2,340.00
KSGMD10001	Modem, USR	161.25	215.00
KSGCB22154	Cable, 54", DB-9 Female (Controller) to DB-25 Male(Modem)	30.00	40.00
KSGMD20000	Modem, Tuff, with power cable and interface cable	881.25	1,175.00
KSGUT10001	1RU Mounting Tray Note: Provides mounting space for up to two accessories.	37.50	50.00

NXR-5901

900MHz Digital & FM Base Repeaters - 896-902, 935-941 MHz



GENERAL:

- Conventional / Conventional IP Network
- NEXEDGE Gen1 Network
- NEXEDGE Gen2 Network *
- Occupies 1 RU
- Wideband Coverage
- 0.36 W RF Output Power
- Operates in analog mode at 25 KHz or 12.5 KHz, or in digital mode at 12.5 KHz or 6.25 KHz.
- Built-in 0.5 ppm TCXO
- LED Status Indicators
- USB 2.0 Type-B Interface
- Programming information is required to properly configure each system. Please contact your Kenwood Systems Regional Manager for assistance.

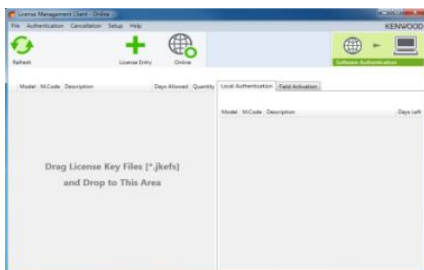
GENERAL OPTIONS:

- External amplifier with built-in T/R antenna switching for simplex operation
- Wire line remote control
- Power supply options such as integrated SmartCharger and Low Voltage Disconnect for battery backup applications.
- High performance 6 cavity BpBr duplexer is available
- Multi-channel combining systems quoted on an individual system basis
- Mounting options include 20 RU (42") and 40 RU (77") locking cabinets in addition to 17 RU (3') and 45 RU (7') open equipment racks.
- Amplifier choices include 75W and 130W options.
- Custom configurations are available; contact your Kenwood Systems Regional Sales Manager for details.

TRUNKING OPTIONS

- Enabling of Trunking feature
- Secondary, restricted-level service keys for management of less critical system parameters available. Each trunking system requires an Ethernet switch per site. Routers are optional for a single-site system but required for multi-site systems.
- System switches and routers are recommended, but most commercially available network equipment is compatible.

NXR-5901 REPEATER	EPL	LIST
NXR-5901K Repeater, Digital, RX 896-902MHz, TX 935-941MHz	4,312.50	5,750.00



KPT-300LMC
License Management Client

KPT-300LMC is a required software package that is used to authenticate **software**

KPT-300LMC is available as a free download from Kenwood Tools and is also supplied with applicable software.

NOTE: A license key is required for the KPT-300LMC to authenticate the software prior to use. To receive a license key, complete the "[Account Request Form](#)" and return to the Kenwood Systems Order Desk.

Note: KPT-300LMC is compatible with Windows Vista/7/8/8.1 Only. Windows XP is not supported.

License Keys will be E-Mailed to the address provided on the Account Request Form. A hard copy will follow by mail for your records.

KPT-300LMC	License Management Client	NC	NC
L-5000	Account Registration Key Note: specify the number of PC's used for Radio Feature License Activation.	NC	NC

SOFTWARE LICENSE OPTIONS **EPL** **LIST**

TO PLACE AN ORDER FOR SOFTWARE:

1. Complete the attached Software License Key Request Form.
2. Submit along with your PO to the SYSTEMS Order Desk via:
 - a) E-Mail: systemsorderdesk@us.jvckenwood.com
 - b) Fax: (678) 957-1880
3. License Keys will be E-mailed to the address provided on the order form. A hard copy will follow by mail for your records.

Software License Key Discount Structure

1 License Key	---
2 ~ 4 License Keys	10% OFF
5 ~ 14 License Keys	35% OFF
15 ~ 24 License Keys	40% OFF

SOFTWARE LICENSE OPTIONS		EPL	LIST
KPG-D2NK	License Key for KPG-D2NK Programming Software for NXR-5000 Repeater (Windows® Vista/7/8/8.1) Note: - Requires KPT-300LMC for authentication. - To program NXR-5000, Type A/B USB Cable (KSGCB10206) may be required.	77.44	103.25

RADIO FEATURE LICENSE OPTIONS

PCs registered under the same KPT-300LMC Account Registration Key (License Key) will be able to authentic Radio Features that can then be viewed / shared / managed by all registered users for the account.

*** TO PLACE AN ORDER FOR RADIO FEATURE LICENSES:**

1. Complete the attached Radio Feature Request Form.
2. Submit along with your PO to the SYSTEMS Order Desk via:
 - a) E-Mail: systemsorderdesk@us.jvckenwood.com
 - b) Fax: (678) 957-1880
3. License Keys will be E-mailed to the address provided on the request form. A hard copy will follow by mail for your records.

Note: Radio Feature License Keys can be transferable from a radio to radio within 72 hours count started from being authenticated to a Radio. Once license transferred radio is authenticated by KPT-300LMC, 72 hours is reset and count started from first.

KWD-NX50VTR	License Key for NXR-5000 Vote System	300.00	500.00
-------------	--------------------------------------	--------	--------

BASIC ACCESSORIES		EPL	LIST
KXK-3M3	6.25KHz "Very Narrow Band" Option High Stability Reference Oscillator Note: Only one KXK-3M3 required per site for 12.5kHa and 6.25KHz operation.	2,499.75	3,333.00
KPG-149RM	Nexedge Repeater Monitoring Software	187.50	250.00
KSGCB10206	Programming USB A/B Cable	12.75	17.00
B5B-7278-00	NXR-5901 Service Manual	37.50	50.00

RF REPEATER STATION AMPLIFIER OPTIONS

Note: Includes One Cable for Radio Connectivity.

KSGPA25172	928-943MHz, 250mW Input, 75W Output	2,175.00	2,900.00
KSGPA25132	935-940MHz, 250mW Input, 130W Output	2,872.50	3,830.00

POWER SUPPLY OPTIONS

KSGPS20400	40A, 13.8VDC, 19" Wide Rack-Mounted Power Supply Note: Incompatible with 130W amplifier option.	356.25	475.00
KSGPS20352	35A, 13.8VDC, 19" Wide Rack-Mounted Power Supply with SmartCharger Note: Incompatible with 130W amplifier option.	1,016.25	1,355.00
KSGPS20701	70A, 13.8VDC, 19" Wide Rack-Mounted Power Supply	1,016.25	1,355.00
KSGPS20702	70A, 13.8VDC, 19" Wide Rack-Mounted Power Supply with SmartCharger	1,305.00	1,740.00

MOUNTING CONFIGURATIONS

KSGMRCK3	3' (17RU) Aluminum Equipment Rack with Crate (KSGMT13000, KSGMT0C03R)	810.00	1,080.00
KSGMRCK7	7' (45RU) Aluminum Equipment Rack with Crate (KSGMT17000, KSGMT0C07R)	900.00	1,200.00
KSGMCAB4	77" (40RU) Locking Cabinet with Crate (KSGMT20040, KSGMT0C40U)	2,006.25	2,675.00

KSGMT20020	42" (20RU) Locking Cabinet	1,500.00	2,000.00
KSGMT0C20U	Crate for 42" (20RU) Locking Cabinet Note: Optional for situations where extra protection during transportation is required.	258.75	345.00
KSGMT20001	Cabinet Solid Top Panel	67.50	90.00
KSGMT20002	Cabinet Fan Top Assembly	326.25	435.00
KSGMT20003	Cabinet Solid Floor Panel (includes five pre-drilled openings and grommets)	105.00	140.00

WIRELINEREMOTE CONTROL OPTIONS		EPL	LIST
---------------------------------------	--	------------	-------------

KSGTN02A	2 Channel Tone Termination Panel (KSGTM10012, KSGTM10TCS, KSGCB32801) Note: 2 or 4 wire, 600-Ohm balanced audio with monitor.	491.25	655.00
KSGTN02N	N-Series 2 Channel Tone Termination Panel (KSGTM10060, KSGTM20TCS, KSGCB32801) Note: 2 or 4 wire, 600-Ohm balanced audio with monitor and automatic line leveling.	502.50	670.00
KSGTDC2A	DC Termination Panel (KSGTM10003, KSGTM10TCS, KSGCB32801) Note: 2 or 4 wire, 600-Ohm balanced audio with monitor. Specify DC current settings at time of order.	307.50	410.00
KSGTALD1	600 Ohm Line Driver (KSGTM10021, KSGTM10TCS, KSGCB32801) Note: 1 channel receive audio line driver panel, 2 wire, 600Ohm balanced output. May also be configured to support 4-wire E&M interface applications.	270.00	360.00

ETHERNET SWITCH & ROUTER OPTIONS		EPL	LIST
---	--	------------	-------------

Note: One switch is required for each site; VPN router(s) may be required for multi-site systems depending on desired configuration. When needed, VPN router(s) are required in addition to and in conjunction with network switch equipment. Multicast Router options are also available.

KSGNS10008	8-Port Managed Network Switch Note: 1RU Mounting Tray (KSGUT10001) sold separately.	187.50	250.00
KSGNS10024	Rack Mounted 24-Port Managed Network Switch	281.25	375.00
KSGRT10004	4-Port Managed VPN Router Note: 1RU Mounting Tray (KSGUT10001) sold separately.	281.25	375.00

INTERNAL TRUNKING AND NETWORKING OPTIONS		EPL	LIST
---	--	------------	-------------

KSGPG91800	Repeater Trunking Feature Note: One Feature required for each trunking repeater.	1,125.00	1,500.00
KSGPG91810	Multi-Site Networking Feature Note: One required for each networked site	8,750.25	11,667.00
KSGPGKEYSM	System Manager Software and Secure USB Key Package (KPG-110SMK, KSGPGKEY01) Note: Only required when used as a trunking system. Software/Key package discount has been applied. (See component pricing below.)	437.25	583.00
KPG-110SMK	System Manager Trunking Software Note: Additional Programming Software (One copy included with KSGPGKEYSM) Software cannot be opened without a valid KSGPGKEY01 or KSGPGKEY02 secure USB key..	344.25	459.00
KSGPGKEY01	Grade-1 Unlimited Access Secure USB Programming Key	125.25	167.00
KSGPGKEY02	Grade-2 Limited Access Secure USB Programming Key	125.25	167.00

USB KEY FUNCTION OR CAPABILITY	GRADE-1 (BLUE)	GRADE-2 (YELLOW)
PROGRAM GENERAL SYSTEM PARAMETERS	√	√
ADD / DELETE / EDIT USERS. TALKGROUPS, CLASSES OF SERVICE, ECT.	√	√
ASSIGN OR EDIT REPEATER NETWORK IP ADDRESSES	√	
ADD NEW REPEATER CHANNEL(S)	√	
SWAP OUT SPARE REPEATERS	√	
CONSTRUCT OR ADD NEW SITES	√	

EXTERNAL TRUNKING CONTROLLER OPTIONS		EPL	LIST
---	--	------------	-------------

KSGC452L	LTR Dispatch Trunking Controller (901-9570, KSGCB32801)	1,158.75	1,545.00
KSGC459L	LTR Dispatch & Interconnect Trunking Controller (905-0123, KSGCB32801)	1,777.50	2,370.00

MISC STATION OPTIONS		EPL	LIST
-----------------------------	--	------------	-------------

KSGDX15044	4 Cavity 900MHz BpBr Duplexer Note: Bandpass/Bandreject duplexer, 250W continuous duty, minimum TX-RX 5MHz. Includes RF cables, mounting and tuning. Includes one LMR-400 interface cable.	1,743.75	2,325.00
KSGOMOD1	Basic Site Management Modem (KSGMD10001, KSGCB22154) Note: Modem 2400 bps to be used with LTR controllers, includes interface cable.	191.25	255.00
MISC STATION OPTIONS, CON'T		EPL	LIST
KSGOMOD2	High Performance Site Management Modem (KSGMD20000, KSGCB22154) Note: Modem 2400 bps, extra stability in high RF environments, includes interface cable.	911.25	1,215.00
KSGSNV12	Signal-to-Noise Modular Voting Comparator Note: 19" rack mount; occupies 3RU. Order Station Module Cards below.	6,000.00	8,000.00
KSGVOT2A	Station Module Card for Signal-to-Noise Voter (SVM-2)	1,147.50	1,530.00
KSGOPTG1	Pilot Tone Generator and Line Driver (PTG-10) Note: For use with voting systems, supplies 600 Ohm balanced 2-wire audio.	663.75	885.00
COMPONENTS		EPL	LIST
KSGMT13000	Rack, Equipment, 3' Tall, 19 Inches Wide	540.00	720.00
KSGMT0C03R	Crate for 3' Rack	270.00	360.00
KSGMT17000	Rack, Equipment, 7' Tall, 19 Inches Wide	487.50	650.00
KSGMT0C07R	Crate for 7' Rack	412.50	550.00
KSGMT20040	Cabinet, 40U w/Hardware Kit Pre-Punched Pontoon Base	1,616.25	2,155.00
KSGMT0C40U	Crate for 40U Cabinet	390.00	520.00
KSGTM10012	Panel, Tone Term, 2 ch., no case, full dup, 2 or 4 wire, w/monitor	420.00	560.00
KSGTM10TCS	Case, Tone Term Panel	48.75	65.00
KSGCB32801	Cable, Interface, Tone to '50	22.50	30.00
KSGTM10060	Panel, Tone Term (N-Series), 2 ch., no case, full dup, 2 or 4 wire, w/monitor	427.50	570.00
KSGTM20TCS	Case, Tone Term Panel (N-Series)	52.50	70.00
KSGTM10003	Term panel, DC, 2ch, 2/4-wire, full duplex	236.25	315.00
KSGTM10021	600 Ohm Balanced Line Driver	198.75	265.00
KSGCB30532	Cable, 32", DB-25 Male (Controller) to DB-25 Male(Repeater)	30.00	40.00
901-9570	Controller, Dispatch Trunking (Zetron Model 452)	1,136.25	1,515.00
905-0123	Controller, Dispatch Trunking with Interconnect (Zetron Model 459)	1,755.00	2,340.00
KSGMD10001	Modem, USR	161.25	215.00
KSGCB22154	Cable, 54", DB-9 Female (Controller) to DB-25 Male(Modem)	30.00	40.00
KSGMD20000	Modem, Tuff, with power cable and interface cable	881.25	1,175.00
KSGUT10001	1RU Mounting Tray Note: Provides mounting space for up to two accessories.	37.50	50.00

NXR-710

VHF High Performance Base Stations and Repeaters - High Band 136-174MHz



GENERAL:

- Occupies 2 RU.
- May be used as a standalone 25 W continuous or 50W intermittent duty station or in conjunction with an external power amplifier.
- Operates in analog mode at 25 KHz or 12.5 KHz, or in digital mode at 12.5 KHz or 6.25 KHz.

OPTIONS:

- External amplifiers with built-in T/R antenna switching for simplex operation.
- Wire line remote control.
- Power supply options such as integrated SmartCharger and Low Voltage Disconnect for battery backup applications.
- High performance 6 cavity BpBr duplexer is also available.
- Multi-channel combining systems are quoted on an individual system basis
- Mounting options include 20 RU (42") and 40 RU (77") locking cabinets in addition to 17 RU (3') and 45 RU (7") open equipment racks.
- Amplifier choices include 50W, 110W or 150W options.
- Custom configurations are also available; contact your Kenwood Systems Regional Sales Manager for more details.

NXR-710 REPEATER		EPL	LIST
NXR-710K	Repeater, Digital, VHF, 136-174MHz, 25-50W	1,612.50	2,150.00
BASIC ACCESSORIES		EPL	LIST
KPG-46XM	Programming Cable	118.88	158.50
KPG-129DNK	Repeater Programming Software	77.44	103.25
KPG-149RM	Nexedge Repeater Monitoring Software	187.50	250.00
B51-8901-00	NXR-710 Service Manual	37.50	50.00
KTI-3M	Network Interface Unit - Required for Conv. IP Networking Functionality	198.75	265.00
KWD-NX10VTR	Voting System Option	375.00	500.00
RF BASE STATION AMPLIFIER OPTIONS		EPL	LIST
Note: Includes Two Cables for Radio Connectivity and an Internal Antenna Relay.			
KSGPA22423	136-174MHz, 3W Input, 25-50W Output	1,492.50	1,990.00
KSGPA22400	136-144MHz, 3W Input, 55-110W Output	1,878.75	2,505.00
KSGPA22410	144-152MHz, 3W Input, 55-110W Output	1,878.75	2,505.00
KSGPA22420	152-162MHz, 3W Input, 55-110W Output	1,878.75	2,505.00
KSGPA22430	162-174MHz, 3W Input, 55-110W Output	1,878.75	2,505.00
KSGPA22451	136-144MHz, 3W Input, 150W Output	2,790.00	3,720.00
KSGPA22452	144-152MHz, 3W Input, 150W Output	2,790.00	3,720.00
KSGPA22453	152-162MHz, 3W Input, 150W Output	2,790.00	3,720.00
KSGPA22454	162-174MHz, 3W Input, 150W Output	2,790.00	3,720.00
KSGPA22258	152-162MHz, 3W Input, 250W Output	3,450.00	4,600.00
KSGPA22523	136-174MHz, 25W Input, 25-50W Output	1,492.50	1,990.00
KSGPA22500	136-144MHz, 25W Input, 55-110W Output	1,878.75	2,505.00
KSGPA22510	144-152MHz, 25W Input, 55-110W Output	1,878.75	2,505.00
KSGPA22520	152-162MHz, 25W Input, 55-110W Output	1,878.75	2,505.00
KSGPA22530	162-174MHz, 25W Input, 55-110W Output	1,878.75	2,505.00
KSGPA22551	136-144MHz, 25W Input, 150W Output	2,790.00	3,720.00

KSGPA22552	144-152MHz, 25W Input, 150W Output	2,790.00	3,720.00
KSGPA22553	152-162MHz, 25W Input, 150W Output	2,790.00	3,720.00
KSGPA22554	162-174MHz, 25W Input, 150W Output	2,790.00	3,720.00

RF REPEATER STATION AMPLIFIER OPTIONS		EPL	LIST
--	--	------------	-------------

Note: Includes One Cable for Radio Connectivity.

KSGPA22403	136-174MHz, 3W Input, 25-50W Output	1,248.75	1,665.00
KSGPA22411	136-144MHz, 3W Input, 55-110W Output	1,620.00	2,160.00
KSGPA22412	144-152MHz, 3W Input, 55-110W Output	1,620.00	2,160.00
KSGPA22413	152-162MHz, 3W Input, 55-110W Output	1,620.00	2,160.00
KSGPA22414	162-174MHz, 3W Input, 55-110W Output	1,620.00	2,160.00
KSGPA22441	136-144MHz, 3W Input, 150W Output	2,295.00	3,060.00

RF REPEATER STATION AMPLIFIER OPTIONS, CON'T		EPL	LIST
---	--	------------	-------------

Note: Includes One Cable for Radio Connectivity.

KSGPA22442	144-152MHz, 3W Input, 150W Output	2,295.00	3,060.00
KSGPA22443	152-162MHz, 3W Input, 150W Output	2,295.00	3,060.00
KSGPA22444	162-174MHz, 3W Input, 150W Output	2,295.00	3,060.00
KSGPA22253	152-162MHz, 3W Input, 250W Output	3,045.00	4,060.00
KSGPA22503	136-174MHz, 25W Input, 25-50W Output	1,248.75	1,665.00
KSGPA22511	136-144MHz, 25W Input, 55-110W Output	1,620.00	2,160.00
KSGPA22512	144-152MHz, 25W Input, 55-110W Output	1,620.00	2,160.00
KSGPA22513	152-162MHz, 25W Input, 55-110W Output	1,620.00	2,160.00
KSGPA22514	162-174MHz, 25W Input, 55-110W Output	1,620.00	2,160.00
KSGPA22541	136-144MHz, 25W Input, 150W Output	2,295.00	3,060.00
KSGPA22542	144-152MHz, 25W Input, 150W Output	2,295.00	3,060.00
KSGPA22543	152-162MHz, 25W Input, 150W Output	2,295.00	3,060.00
KSGPA22544	162-174MHz, 25W Input, 150W Output	2,295.00	3,060.00

POWER SUPPLY OPTIONS		EPL	LIST
-----------------------------	--	------------	-------------

KSGPS20400	40A, 13.8VDC, 19" Wide Rack-Mounted Power Supply Note: Incompatible with 150W or 250W amplifier option.	356.25	475.00
KSGPS20352	35A, 13.8VDC, 19" Wide Rack-Mounted Power Supply with SmartCharger Note: Incompatible with 150W or 250W amplifier option.	1,016.25	1,355.00
KSGPS20701	70A, 13.8VDC, 19" Wide Rack-Mounted Power Supply	1,016.25	1,355.00
KSGPS20702	70A, 13.8VDC, 19" Wide Rack-Mounted Power Supply with SmartCharger	1,305.00	1,740.00

MOUNTING CONFIGURATIONS		EPL	LIST
--------------------------------	--	------------	-------------

KSGMRCK3	3' (17RU) Aluminum Equipment Rack with Crate (KSGMT13000, KSGMT0C03R)	810.00	1,080.00
KSGMRCK7	7' (45RU) Aluminum Equipment Rack with Crate (KSGMT17000, KSGMT0C07R)	900.00	1,200.00
KSGMCAB4	77" (40RU) Locking Cabinet with Crate (KSGMT20040, KSGMT0C40U)	2,006.25	2,675.00
KSGMT20020	42" (20RU) Locking Cabinet	1,500.00	2,000.00
KSGMT0C20U	Crate for 42" (20RU) Locking Cabinet Note: Optional for situations where extra protection during transportation is required.	258.75	345.00
KSGMT20001	Cabinet Solid Top Panel	67.50	90.00
KSGMT20002	Cabinet Fan Top Assembly	326.25	435.00
KSGMT20003	Cabinet Solid Floor Panel (includes five pre-drilled openings and grommets)	105.00	140.00

WIRELINE REMOTE CONTROL OPTIONS		EPL	LIST
--	--	------------	-------------

KSGTN02A	2 Channel Tone Termination Panel (KSGTM10012, KSGTM10TCS, KSGCB32801) Note: 2 or 4 wire, 600-Ohm balanced audio with monitor.	491.25	655.00
KSGTN02N	N-Series 2 Channel Tone Termination Panel (KSGTM10060, KSGTM20TCS, KSGCB32801) Note: 2 or 4 wire, 600-Ohm balanced audio with monitor and automatic line leveling.	502.50	670.00
KSGTN10A	10 Channel BCD Tone Termination Panel (KSGTM10010, KSGBCDCASE, KSGCB32801) Note: 2 or 4 wire, 600-Ohm balanced audio with monitor.	690.00	920.00
KSGTM20016	16 Channel Tone Termination Panel Note: 2 or 4 wire, 600-Ohm balanced audio with monitor.	711.56	948.75
KSGTDC2A	DC Termination Panel (KSGTM10003, KSGTM10TCS, KSGCB32801) Note: 2 or 4 wire, 600-Ohm balanced audio with monitor. Specify DC current settings at time of order.	307.50	410.00
KSGTALD1	600 Ohm Line Driver (KSGTM10021, KSGTM10TCS, KSGCB32801) Note: 1 channel receive audio line driver panel, 2 wire, 600Ohm balanced output. May also be configured to support 4-wire E&M interface applications.	705.00	940.00

ETHERNET SWITCH & ROUTER OPTIONS

EPL

LIST

Note: One switch is required for each site; VPN router(s) may be required for multi-site systems depending on desired configuration. When needed, VPN router(s) are required in addition to and in conjunction with network switch equipment. Multicast Router options are also available.

KSGNS10008	8-Port Managed Network Switch Note: 1RU Mounting Tray (KSGUT10001) sold separately.	187.50	250.00
KSGNS10024	Rack Mounted 24-Port Managed Network Switch	281.25	375.00
KSGRT10004	4-Port Managed VPN Router Note: 1RU Mounting Tray (KSGUT10001) sold separately.	281.25	375.00

TYPE-D TRUNKING OPTIONS

EPL

LIST

KWD-10DTR	Type-D Single Site Repeater Trunking Feature Note: One Feature required for each trunking repeater. Only 6.25kHz operation is available in Type-D Single Site Trunking.	187.50	250.00
KTI-5M	Network Adapter Device- Required for Type-D Trunking Web Access Note: For field upgrade, please download KPG-1006DNA from TOOLS and install to your KTI-5M. (Installation Manual is included.)	324.00	432.00
L-1794	Instillation KPG-1006DNA Firmware for KTI-5M at Factory.	N/C	N/C

EXTERNAL TRUNKING CONTROLLER OPTIONS

EPL

LIST

KSGC452L	LTR Dispatch Trunking Controller (901-9570, KSGCB32801)	1,158.75	1,545.00
KSGC459L	LTR Dispatch & Interconnect Trunking Controller (905-0123, KSGCB32801)	1,777.50	2,370.00

MISC STATION OPTIONS

EPL

LIST

KSGDX12556	6 Cavity VHF BpBr Duplexer Note: Bandpass/Bandreject duplexer, 350W continuous duty, minimum TX-RX 400 KHz. Includes one LMR-400 interface cable.	2,321.25	3,095.00
KSGOMOD1	Basic Site Management Modem (KSGMD10001, KSGCB22154) Note: Modem 2400 bps to be used with LTR controllers, includes interface cable.	191.25	255.00
KSGOMOD2	High Performance Site Management Modem (KSGMD20000, KSGCB22154) Note: Modem 2400 bps, extra stability in high RF environments, includes interface cable.	911.25	1,215.00
KSGSNV12	Signal-to-Noise Modular Voting Comparator Note: 19" rack mount; occupies 3RU. Order Station Module Cards below.	6,000.00	8,000.00
KSGVOT2A	Station Module Card for Signal-to-Noise Voter (SVM-2)	1,147.50	1,530.00
KSGOPTG1	Pilot Tone Generator and Line Driver (PTG-10) Note: For use with voting systems, supplies 600 Ohm balanced 2-wire audio.	663.75	885.00
KSGMS10010	Relay, Antenna, x10 Series, 50W	255.00	340.00

COMPONENTS

EPL

LIST

KSGMT13000	Rack, Equipment, 3' Tall, 19 Inches Wide	540.00	720.00
KSGMT0C03R	Crate for 3' Rack	270.00	360.00
KSGMT17000	Rack, Equipment, 7' Tall, 19 Inches Wide	487.50	650.00
KSGMT0C07R	Crate for 7' Rack	412.50	550.00
KSGMT20040	Cabinet, 40U w/Hardware Kit Pre-Punched Pontoon Base	1,616.25	2,155.00

KSGMT0C40U	Crate for 40U Cabinet	390.00	520.00
KSGTM10012	Panel, Tone Term, 2 ch., no case, full dup, 2 or 4 wire, w/monitor	420.00	560.00
KSGTM10TCS	Case, Tone Term Panel	48.75	65.00
KSGCB32801	Cable, Interface, Tone to '50	22.50	30.00
KSGTM10060	Panel, Tone Term (N-Series), 2 ch., no case, full dup, 2 or 4 wire, w/monitor	427.50	570.00
KSGTM20TCS	Case, Tone Term Panel (N-Series)	52.50	70.00
KSGTM10010	Panel, Tone Term, 10 ch., with case, full dup, 2 or 4 wire, w/mon	615.00	820.00
KSGBCDCASE	Case, Tone Term Panel	52.50	70.00
KSGTM10003	Term panel, DC, 2ch, 2/4-wire, full duplex	236.25	315.00
KSGTM10021	600 Ohm Balanced Line Driver	198.75	265.00
KSGCB30532	Cable, 32", DB-25 Male (Controller) to DB-25 Male(Repeater)	30.00	40.00
901-9570	Controller, Dispatch Trunking (Zetron Model 452)	1,136.25	1,515.00
905-0123	Controller, Dispatch Trunking with Interconnect (Zetron Model 459)	1,755.00	2,340.00
KSGMD10001	Modem, USR	161.25	215.00
KSGCB22154	Cable,54",DB-9 Female (Controller) to DB-25 Male(Modem)	30.00	40.00
KSGMD20000	Modem, Tuff, with power cable and interface cable	881.25	1,175.00
KSGUT10001	1RU Mounting Tray Note: Provides mounting space for up to two accessories.	37.50	50.00

NXR-810

UHF Base Stations and Repeaters - 400-520 MHz



GENERAL:

- Integrated Systems
- Occupies 2 RU
- May be used as a standalone 25 W continuous or 40W intermittent duty station or in conjunction with an external power amplifier.
- Operates in analog mode at 25 KHz or 12.5 KHz, or in digital mode at 12.5 KHz or 6.25 KHz.

OPTIONS:

- External amplifiers with built-in T/R antenna switching for simplex operation
- Wire line remote control.
- Power supply options such as integrated SmartCharger and Low Voltage Disconnect for battery backup applications.
- High performance 4 and 6 cavity BpBr duplexer are also available.
- Multi-channel combining systems are quoted on an individual system basis
- Mounting options include 20 RU (42") and 40 RU (77") locking cabinets in addition to 17 RU (3') and 45 RU (7') open equipment racks.
- Amplifier choices include 40W, 100W or 150W options.
- Custom configurations are also available; contact your Kenwood Systems Regional Sales Manager for more details.

NXR-810 REPEATER		EPL	LIST
NXR-810K	Repeater, Digital, UHF, 450-520MHz, 1-40W	1,612.50	2,150.00
NXR-810K2	Repeater, Digital, UHF, 400-470MHz, 1-40W	1,612.50	2,150.00
BASIC ACCESSORIES		EPL	LIST
KPG-46XM	Programming Cable	118.88	158.50
KPG-129DNK	Repeater Programming Software	77.44	103.25
KPG-149RM	Nexedge Repeater Monitoring Software	187.50	250.00
B51-8902-00	NXR-810 Service Manual	37.50	50.00
KTI-3M	Network Interface Unit - Required for Conv. IP Networking Functionality	198.75	265.00
KWD-NX10VTR	Voting System Option	375.00	500.00
RF BASE STATION AMPLIFIER OPTIONS		EPL	LIST
Note: Includes Two Cables for Radio Connectivity.			
KSGPA23421	406-450MHz, 3W Input, 20-40W Output	1,462.50	1,950.00
KSGPA23423	450-512MHz, 3W Input, 20-40W Output	1,462.50	1,950.00
KSGPA23400	406-450MHz, 3W Input, 50-100W Output	1,950.00	2,600.00
KSGPA23420	450-512MHz, 3W Input, 50-100W Output	1,950.00	2,600.00
KSGPA23451	406-450MHz, 3W Input, 150W Output	3,420.00	4,560.00
KSGPA23453	450-512MHz, 3W Input, 150W Output	3,420.00	4,560.00
KSGPA23521	406-450MHz, 25W Input, 20-40W Output	1,462.50	1,950.00
KSGPA23523	450-512MHz, 25W Input, 20-40W Output	1,462.50	1,950.00
KSGPA23500	406-450MHz, 25W Input, 50-100W Output	1,950.00	2,600.00
KSGPA23520	450-512MHz, 25W Input, 50-100W Output	1,950.00	2,600.00
KSGPA23551	406-450MHz, 25W Input, 150W Output	3,420.00	4,560.00
KSGPA23553	450-512MHz, 25W Input, 150W Output	3,420.00	4,560.00
RF REPEATER STATION AMPLIFIER OPTIONS		EPL	LIST
Note: Includes One Cable for Radio Connectivity.			
KSGPA23401	406-450MHz, 3W Input, 20-40W Output	1,248.75	1,665.00

KSGPA23403	450-512MHz, 3W Input, 20-40W Output	1,248.75	1,665.00
KSGPA23411	406-450MHz, 3W Input, 50-100W Output	1,620.00	2,165.00
KSGPA23413	450-512MHz, 3W Input, 50-100W Output	1,620.00	2,165.00
KSGPA23441	406-450MHz, 3W Input, 150W Output	2,955.00	3,940.00
KSGPA23443	450-512MHz, 3W Input, 150W Output	2,955.00	3,940.00
KSGPA23501	406-450MHz, 25W Input, 20-40W Output	1,248.75	1,665.00
KSGPA23503	450-512MHz, 25W Input, 20-40W Output	1,248.75	1,665.00
KSGPA23511	406-450MHz, 25W Input, 50-100W Output	1,620.00	2,165.00
KSGPA23513	450-512MHz, 25W Input, 50-100W Output	1,620.00	2,165.00

RF REPEATER STATION AMPLIFIER OPTIONS, CON'T

EPL

LIST

Note: Includes One Cable for Radio Connectivity.

KSGPA23541	406-450MHz, 25W Input, 150W Output	2,955.00	3,940.00
KSGPA23543	450-512MHz, 25W Input, 150W Output	2,955.00	3,940.00

POWER SUPPLY OPTIONS

EPL

LIST

KSGPS20400	40A, 13.8VDC, 19" Wide Rack-Mounted Power Supply Note: Incompatible with 150W amplifier option.	356.25	475.00
KSGPS20352	35A, 13.8VDC, 19" Wide Rack-Mounted Power Supply with SmartCharger Note: Incompatible with 150W amplifier option.	1,016.25	1,355.00
KSGPS20701	70A, 13.8VDC, 19" Wide Rack-Mounted Power Supply	1,016.25	1,355.00
KSGPS20702	70A, 13.8VDC, 19" Wide Rack-Mounted Power Supply with SmartCharger	1,305.00	1,740.00

MOUNTING CONFIGURATIONS

EPL

LIST

KSGMRCK3	3' (17RU) Aluminum Equipment Rack with Crate (KSGMT13000, KSGMT0C03R)	810.00	1,080.00
KSGMRCK7	7' (45RU) Aluminum Equipment Rack with Crate (KSGMT17000, KSGMT0C07R)	900.00	1,200.00
KSGMCAB4	77" (40RU) Locking Cabinet with Crate (KSGMT20040, KSGMT0C40U)	2,006.25	2,675.00
KSGMT20020	42" (20RU) Locking Cabinet	1,500.00	2,000.00
KSGMT0C20U	Crate for 42" (20RU) Locking Cabinet Note: Optional for situations where extra protection during transportation is required.	258.75	345.00
KSGMT20001	Cabinet Solid Top Panel	67.50	90.00
KSGMT20002	Cabinet Fan Top Assembly	326.25	435.00
KSGMT20003	Cabinet Solid Floor Panel (includes five pre-drilled openings and grommets)	105.00	140.00

WIRELINE REMOTE CONTROL OPTIONS

EPL

LIST

KSGTN02A	2 Channel Tone Termination Panel (KSGTM10012, KSGTM10TCS, KSGCB32801) Note: 2 or 4 wire, 600-Ohm balanced audio with monitor.	491.25	655.00
KSGTN02N	N-Series 2 Channel Tone Termination Panel (KSGTM10060, KSGTM20TCS, KSGCB32801) Note: 2 or 4 wire, 600-Ohm balanced audio with monitor and automatic line leveling.	502.50	670.00
KSGTN10A	10 Channel BCD Tone Termination Panel (KSGTM10010, KSGBCDCASE, KSGCB32801) Note: 2 or 4 wire, 600-Ohm balanced audio with monitor.	690.00	920.00
KSGTM20016	16 Channel Tone Termination Panel Note: 2 or 4 wire, 600-Ohm balanced audio with monitor.	711.56	948.75
KSGTDC2A	DC Termination Panel (KSGTM10003, KSGTM10TCS, KSGCB32801) Note: 2 or 4 wire, 600-Ohm balanced audio with monitor. Specify DC current settings at time of 600 Ohm Line Driver (KSGTM10021, KSGTM10TCS, KSGCB32801)	307.50	410.00
KSGTALD1	Note: 1 channel receive audio line driver panel, 2 wire, 600Ohm balanced output. May also be configured to support 4-wire E&M interface applications.	270.00	360.00

ETHERNET SWITCH & ROUTER OPTIONS

EPL

LIST

Note: One switch is required for each site; VPN router(s) may be required for multi-site systems depending on desired configuration. When needed, VPN router(s) are required in addition to and in conjunction with network switch equipment. Multicast Router options are also available.

KSGNS10008	8-Port Managed Network Switch Note: 1RU Mounting Tray (KSGUT10001) sold separately.	187.50	250.00
------------	---	--------	--------

KSGNS10024	Rack Mounted 24-Port Managed Network Switch	281.25	375.00
KSGRT10004	4-Port Managed VPN Router Note: 1RU Mounting Tray (KSGUT10001) sold separately.	281.25	375.00
TYPE-D TRUNKING OPTIONS		EPL	LIST
KWD-10DTR	Type-D Single Site Repeater Trunking Feature Note: One Feature required for each trunking repeater. Only 6.25kHz operation is available in Type-D Single Site Trunking.	187.50	250.00
KTI-5M	Network Adapter Device- Required for Type-D Trunking Web Access Note: For field upgrade, please download KPG-1006DNA from TOOLS and install to your KTI-5M. (Installation Manual is included.)	324.00	432.00
L-1794	Instllation KPG-1006DNA Firmware for KTI-5M at Factory.	N/C	N/C
EXTERNAL TRUNKING CONTROLLER OPTIONS		EPL	LIST
KSGC452L	LTR Dispatch Trunking Controller (901-9570, KSGCB32801)	1,158.75	1,545.00
KSGC459L	LTR Dispatch & Interconnect Trunking Controller (905-0123, KSGCB32801)	2,655.00	3,540.00
MISC STATION OPTIONS		EPL	LIST
KSGDX13546	6 Cavity UHF BpBr Duplexer (450-470MHz Only) Note: Bandpass/Bandreject duplexer, 250W continuous duty. Includes one LMR-400 interface cable.	2,321.25	3,095.00
KSGDX23101	4 Cavity UHF BpBr Duplexer (450-470MHz Only) Note: Bandpass/Bandreject duplexer, 350W continuous duty. Includes one LMR-400 interface	1,331.25	1,775.00
KSGOMOD1	Basic Site Management Modem (KSGMD10001, KSGCB22154) Note: Modem 2400 bps to be used with LTR controllers, includes interface cable.	191.25	255.00
KSGOMOD2	High Performance Site Management Modem (KSGMD20000, KSGCB22154) Note: Modem 2400 bps, extra stability in high RF environments, includes interface cable.	911.25	1,215.00
KSGSNV12	Signal-to-Noise Modular Voting Comparator Note: 19" rack mount; occupies 3RU. Order Station Module Cards below.	6,000.00	8,000.00
KSGVOT2A	Station Module Card for Signal-to-Noise Voter (SVM-2)	1,147.50	1,530.00
KSGOPTG1	Pilot Tone Generator and Line Driver (PTG-10) Note: For use with voting systems, supplies 600 Ohm balanced 2-wire audio.	663.75	885.00
KSGMS10010	Relay, Antenna, x10 Series, 50W	255.00	340.00
COMPONENTS		EPL	LIST
KSGMT13000	Rack, Equipment, 3' Tall, 19 Inches Wide	540.00	720.00
KSGMT0C03R	Crate for 3' Rack	270.00	360.00
KSGMT17000	Rack, Equipment, 7' Tall, 19 Inches Wide	487.50	650.00
KSGMT0C07R	Crate for 7' Rack	412.50	550.00
KSGMT20040	Cabinet, 40U w/Hardware Kit Pre-Punched Pontoon Base	1,616.25	2,155.00
KSGMT0C40U	Crate for 40U Cabinet	390.00	520.00
KSGTM10012	Panel, Tone Term, 2 ch., no case, full dup, 2 or 4 wire, w/monitor	420.00	560.00
KSGTM10TCS	Case, Tone Term Panel	48.75	65.00
KSGCB32801	Cable, Interface, Tone to '50	22.50	30.00
KSGTM10060	Panel, Tone Term (N-Series), 2 ch., no case, full dup, 2 or 4 wire, w/monitor	427.50	570.00
KSGTM20TCS	Case, Tone Term Panel (N-Series)	52.50	70.00
KSGTM10010	Panel, Tone Term, 10 ch., with case, full dup, 2 or 4 wire, w/mon	615.00	820.00
KSGBCDCASE	Case, Tone Term Panel	52.50	70.00
KSGTM10003	Term panel, DC, 2ch, 2/4-wire, full duplex	236.25	315.00
KSGTM10021	600 Ohm Balanced Line Driver	198.75	265.00
KSGCB30532	Cable, 32", DB-25 Male (Controller) to DB-25 Male(Repeater)	30.00	40.00
901-9570	Controller, Dispatch Trunking (Zetron Model 452)	1,136.25	1,515.00

905-0123	Controller, Dispatch Trunking with Interconnect (Zetron Model 459)	1,755.00	2,340.00
KSGMD10001	Modem, USR	161.25	215.00
KSGCB22154	Cable,54",DB-9 Female (Controller) to DB-25 Male(Modem)	30.00	40.00
KSGMD20000	Modem, Tuff, with power cable and interface cable	881.25	1,175.00
KSGUT10001	1RU Mounting Tray Note: Provides mounting space for up to two accessories.	37.50	50.00
KSGTM10060	Panel, Tone Term (N-Series), 2 ch., no case, full dup, 2 or 4 wire, w/monitor	427.50	570.00
KSGTM20TCS	Case, Tone Term Panel (N-Series)	52.50	70.00
KSGTM10010	Panel, Tone Term, 10 ch., with case, full dup, 2 or 4 wire, w/mon	615.00	820.00
KSGBCDCASE	Case, Tone Term Panel	52.50	70.00
KSGTM10003	Term panel, DC, 2ch, 2/4-wire, full duplex	236.25	315.00
KSGTM10021	600 Ohm Balanced Line Driver	198.75	265.00
KSGCB30532	Cable, 32", DB-25 Male (Controller) to DB-25 Male(Repeater)	30.00	40.00
901-9570	Controller, Dispatch Trunking (Zetron Model 452)	1,136.25	1,515.00
905-0123	Controller, Dispatch Trunking with Interconnect (Zetron Model 459)	1,755.00	2,340.00
KSGMD10001	Modem, USR	161.25	215.00
KSGCB22154	Cable,54",DB-9 Female (Controller) to DB-25 Male(Modem)	30.00	40.00
KSGMD20000	Modem, Tuff, with power cable and interface cable	881.25	1,175.00
KSGUT10001	1RU Mounting Tray Note: Provides mounting space for up to two accessories.	37.50	50.00



TKR-D710

DMR VHF Repeaters* - 136-174MHz

* Base Operations are not available.



GENERAL:

- Occupies 2 RU
- Digital 12.5 kHz
- Analog FM 25/12.5 kHz
- 2 slot TDMA
- Mixed Mode
- Call Interruption
- Conventional and Conventional IP* Network

* Requires KTI-5

OPTIONS:

- External amplifier with built-in antenna T/R switch for simplex operation.
- Power supply options such as integrated SmartCharger and Low Voltage Disconnect for battery backup applications.
- High performance 6 cavity BpBr duplexer is also available.
- Multi-channel combining systems are quoted on an individual system basis
- Mounting options include 20 RU (42") and 40 RU (77") locking cabinets in addition to 17 RU (3') and 45 RU (7') open equipment racks.
- Amplifier choices include 50W, 110W or 150W options.
- Custom configurations are also available; contact your Kenwood Systems Regional Sales Manager for more details.

REPEATER		EPL	LIST
TKR-D710K	Repeater, Digital, VHF, 136-174MHz, 5-50W Note: The Control I/O Pins of TX Data Input/TX Audio Input/RX Data Output/RX Audio Output/External Monitor Switch/External PTT Switch are NOT available.	1,668.75	2,225.00

BASIC ACCESSORIES and LABOR		EPL	LIST
KPG-46XM	Programming Cable	118.88	158.50
KPG-174DNK	Repeater Programming Software	77.44	103.25
KPG-149RM	Nexedge Repeater Monitoring Software	187.50	250.00
KTI-5M	Network Adapter Device - Required for Conv. IP Networking Functionality Note: - Must order L-1806 or L-1807 for DMR Conventional IP Configuration - Required for each repeaters	324.00	432.00
L-1806	Installation KPG-1010DMR Firmware and Option for KTI-5M	15.00	20.00
L-1807	KTI-5 Field Upgrade Option for DMR IP Network	15.00	20.00
B5B-7228-00	TKR-D710 Service Manual	37.50	50.00

RF BASE STATION AMPLIFIER OPTIONS		EPL	LIST
Note: Includes Two Cables for Radio Connectivity and an Internal Antenna Relay.			
KSGPA22423	136-174MHz, 3W Input, 25-50W Output	1,492.50	1,990.00
KSGPA22400	136-144MHz, 3W Input, 55-110W Output	1,878.75	2,505.00
KSGPA22410	144-152MHz, 3W Input, 55-110W Output	1,878.75	2,505.00
KSGPA22420	152-162MHz, 3W Input, 55-110W Output	1,878.75	2,505.00
KSGPA22430	162-174MHz, 3W Input, 55-110W Output	1,878.75	2,505.00
KSGPA22451	136-144MHz, 3W Input, 150W Output	2,790.00	3,720.00
KSGPA22452	144-152MHz, 3W Input, 150W Output	2,790.00	3,720.00
KSGPA22453	152-162MHz, 3W Input, 150W Output	2,790.00	3,720.00
KSGPA22454	162-174MHz, 3W Input, 150W Output	2,790.00	3,720.00
KSGPA22258	152-162MHz, 3W Input, 250W Output	3,450.00	4,600.00
KSGPA22523	136-174MHz, 25W Input, 25-50W Output	1,492.50	1,990.00
KSGPA22500	136-144MHz, 25W Input, 55-110W Output	1,878.75	2,505.00

KSGPA22510	144-152MHz, 25W Input, 55-110W Output	1,878.75	2,505.00
KSGPA22520	152-162MHz, 25W Input, 55-110W Output	1,878.75	2,505.00
KSGPA22530	162-174MHz, 25W Input, 55-110W Output	1,878.75	2,505.00
KSGPA22551	136-144MHz, 25W Input, 150W Output	2,790.00	3,720.00
KSGPA22552	144-152MHz, 25W Input, 150W Output	2,790.00	3,720.00
KSGPA22553	152-162MHz, 25W Input, 150W Output	2,790.00	3,720.00
KSGPA22554	162-174MHz, 25W Input, 150W Output	2,790.00	3,720.00

RF REPEATER STATION AMPLIFIER OPTIONS

EPL**LIST**

Note: Includes One Cable for Radio Connectivity.

KSGPA22403	136-174MHz, 3W Input, 25-50W Output	1,248.75	1,665.00
KSGPA22411	136-144MHz, 3W Input, 55-110W Output	1,620.00	2,160.00

RF REPEATER STATION AMPLIFIER OPTIONS, CON'T

EPL**LIST**

KSGPA22412	144-152MHz, 3W Input, 55-110W Output	1,620.00	2,160.00
KSGPA22413	152-162MHz, 3W Input, 55-110W Output	1,620.00	2,160.00
KSGPA22414	162-174MHz, 3W Input, 55-110W Output	1,620.00	2,160.00
KSGPA22441	136-144MHz, 3W Input, 150W Output	2,295.00	3,060.00

Note: Includes One Cable for Radio Connectivity.

KSGPA22442	144-152MHz, 3W Input, 150W Output	2,295.00	3,060.00
KSGPA22443	152-162MHz, 3W Input, 150W Output	2,295.00	3,060.00
KSGPA22444	162-174MHz, 3W Input, 150W Output	2,295.00	3,060.00
KSGPA22253	152-162MHz, 3W Input, 250W Output	3,045.00	4,060.00
KSGPA22503	136-174MHz, 25W Input, 25-50W Output	1,248.75	1,665.00
KSGPA22511	136-144MHz, 25W Input, 55-110W Output	1,620.00	2,160.00
KSGPA22512	144-152MHz, 25W Input, 55-110W Output	1,620.00	2,160.00
KSGPA22513	152-162MHz, 25W Input, 55-110W Output	1,620.00	2,160.00
KSGPA22514	162-174MHz, 25W Input, 55-110W Output	1,620.00	2,160.00
KSGPA22541	136-144MHz, 25W Input, 150W Output	2,295.00	3,060.00
KSGPA22542	144-152MHz, 25W Input, 150W Output	2,295.00	3,060.00
KSGPA22543	152-162MHz, 25W Input, 150W Output	2,295.00	3,060.00
KSGPA22544	162-174MHz, 25W Input, 150W Output	2,295.00	3,060.00

POWER SUPPLY OPTIONS

EPL**LIST**

KSGPS20200	DC Switching Power Supply 13.8VDC 20A	191.25	255.00
KSGPS20400	40A, 13.8VDC, 19" Wide Rack-Mounted Power Supply Note: Incompatible with 150W or 250W amplifier option.	356.25	475.00
KSGPS20352	35A, 13.8VDC, 19" Wide Rack-Mounted Power Supply with SmartCharger Note: Incompatible with 150W or 250W amplifier option.	1,016.25	1,355.00
KSGPS20701	70A, 13.8VDC, 19" Wide Rack-Mounted Power Supply	1,016.25	1,355.00
KSGPS20702	70A, 13.8VDC, 19" Wide Rack-Mounted Power Supply with SmartCharger	1,305.00	1,740.00

MOUNTING CONFIGURATIONS

EPL**LIST**

KSGMCAB4	77" (40RU) Locking Cabinet with Crate (KSGMT20040, KSGMT0C40U)	2,006.25	2,675.00
KSGMRCK3	3' (17RU) Aluminum Equipment Rack with Crate (KSGMT13000, KSGMT0C03R)	810.00	1,080.00
KSGMRCK7	7' (45RU) Aluminum Equipment Rack with Crate (KSGMT17000, KSGMT0C07R)	900.00	1,200.00
KSGMT20020	42" (20RU) Locking Cabinet	1,500.00	2,000.00
KSGMT0C20U	Crate for 42" (20RU) Locking Cabinet Note: Optional for situations where extra protection during transportation is required.	258.75	345.00
KSGMT20001	Cabinet Solid Top Panel	67.50	90.00
KSGMT20002	Cabinet Fan Top Assembly	326.25	435.00

KSGMT20003	Cabinet Solid Floor Panel (includes five pre-drilled openings and grommets)	105.00	140.00
ETHERNET SWITCH & ROUTER OPTIONS		EPL	LIST
Note: One switch is required for each site; VPN router(s) may be required for multi-site systems depending on desired configuration. When needed, VPN router(s) are required in addition to and in conjunction with network switch equipment.			
KSGNS10008	8-Port Managed Network Switch Note: 1RU Mounting Tray (KSGUT10001) sold separately.	187.50	250.00
KSGNS10024	Rack Mounted 24-Port Managed Network Switch	281.25	375.00
KSGRT10004	4-Port Managed VPN Router Note: 1RU Mounting Tray (KSGUT10001) sold separately.	281.25	375.00
MISC STATION OPTIONS		EPL	LIST
KSGDX12556	6 Cavity VHF BpBr Duplexer Note: Bandpass/Bandreject duplexer, 350W continuous duty, minimum TX-RX 400 KHz. Includes one LMR-400 interface cable.	2,321.25	3,095.00
COMPONENTS		EPL	LIST
KSGMT13000	Rack, Equipment, 3' Tall, 19 Inches Wide	540.00	720.00
KSGMT0C03R	Crate for 3' Rack	270.00	360.00
KSGMT17000	Rack, Equipment, 7' Tall, 19 Inches Wide	487.50	650.00
KSGMT0C07R	Crate for 7' Rack	412.50	550.00
KSGMT20040	Cabinet, 40U w/Hardware Kit Pre-Punched Pontoon Base	1,616.25	2,155.00
KSGMT0C40U	Crate for 40U Cabinet	390.00	520.00
KSGUT10001	1RU Mounting Tray Note: Provides mounting space for up to two accessories.	37.50	50.00



TKR-D710

DMR VHF Low Power Repeaters - 136-174MHz

* Base Operations are not available.



GENERAL:

- Occupies 2 RU
- Digital 12.5 kHz
- Analog FM 25/12.5 kHz
- 2 slot TDMA
- Mixed Mode
- Call Interruption
- Conventional and Conventional IP* Network

* Requires KT1-5

OPTIONS:

- External amplifiers with built-in T/R antenna switching for simplex operation.
- Power supply options such as integrated SmartCharger and Low Voltage Disconnect for battery backup applications.
- High performance 6 cavity BpBr duplexer is also available.
- Multi-channel combining systems are quoted on an individual system basis
- Mounting options include 20 RU (42") and 40 RU (77") locking cabinets in addition to 17 RU (3') and 45 RU (7') open equipment racks.
- Amplifier choices include 50W, 110W or 150W options.
- Custom configurations are also available; contact your Kenwood Systems Regional Sales Manager for more details.

TKR-D710 REPEATER	EPL	LIST
TKR-D710K Repeater, Digital, VHF, 136-174MHz, 5-50W <i>Note:</i> The Control I/O Pins of TX Data Input/TX Audio Input/RX Data Output/RX Audio Output/External Monitor Switch/External PTT Switch are NOT available.	1,668.75	2,225.00
TKR-D710 REPEATER PACKAGE	EPL	LIST
TKR-D710KPS Repeater Package Includes KSGPS20200 Power Supply (mounted internally), 136-174MHz Repeater 5-50W <i>Note:</i> The Control I/O Pins of TX Data Input/TX Audio Input/RX Data Output/RX Audio Output/External Monitor Switch/External PTT Switch are NOT available.	1,832.25	2,443.00
REPEATER STATION WITH CONVENTIONAL IP NETWORK FUNCTIONALITY	EPL	LIST
TKR-D710KPSI Repeater Package includes KSGPS20200 Power Supply (mounted internally), The KT1-5M Network Adaptor and KPG-1010DMR, 136-174MHz Repeater <i>Note:</i> The Control I/O Pins of TX Data Input/TX Audio Input/RX Data Output/RX Audio Output/External Monitor Switch/External PTT Switch are NOT available.	2,171.25	2,895.00
REPEATER STATION WITH DUPLEXER	EPL	LIST
Note: Duplexers are not available for all frequencies. The default range of duplexers are between 148-160 MHz (VHF) with a 5MHz split between TX and RX, and between 450-460MHz (UHF). Other frequencies or VHF band splits may be available by special order (non-returnable and non-refundable). Pricing for special order duplexers may be higher. Frequencies must be provided with an order.		
TKR-D710KPSD Repeater Station 5-50W 148-160MHz includes KSGPS20200 Power Supply, KSGDX62001 Duplexer, KSGCB20008 Cable, KSGCB20010 Cable <i>Note:</i> The Control I/O Pins of TX Data Input/TX Audio Input/RX Data Output/RX Audio Output/External Monitor Switch/External PTT Switch are NOT available.	2,279.25	3,039.00
REPEATER STATION WITH DUPLEXER AND IP NETWORK FUNCTIONALITY	EPL	LIST
Note: Duplexers are not available for all frequencies. The default range of duplexers are between 148-160 MHz (VHF) with a 5MHz split between TX and RX, and between 450-460MHz (UHF). Other frequencies or VHF band splits may be available by special order (non-returnable and non-refundable). Pricing for special order duplexers may be higher. Duplexer and KT1-5M are mounted inside the Repeater; a separate Rack-Mount Power Supply is included.		
TKR-D710KPSDI Repeater Station 5-50W 148-160MHz includes KSGPS20201 Power Supply, KSGDX62001 Duplexer, KT1-5M and KPG-1010DMR, KSGCB20008 Cable, KSGCB20010 Cable. <i>Note:</i> The Control I/O Pins of TX Data Input/TX Audio Input/RX Data Output/RX Audio Output/External Monitor Switch/External PTT Switch are NOT available.	2,602.50	3,470.00
BASIC ACCESSORIES and LABOR	EPL	LIST
KPG-46XM Programming Cable	118.88	158.50

KPG-174DNK	Repeater Programming Software	77.44	103.25
KPG-149RM	Nexedge Repeater Monitoring Software	187.50	250.00
KTI-5M	Network Adapter Device - Required for Conv. IP Networking Functionality Note: - Must order L-1806 or L-1807 for DMR Conventional IP Configuration - Required for each repeaters	324.00	432.00
L-1806	Instillation KPG-1010DMR Firmware and Option for KTI-5M	15.00	20.00
L-1807	KTI-5 Field Upgrade Option for DMR IP Network	15.00	20.00
B5B-7228-00	TKR-D710 Service Manual	37.50	50.00
POWER SUPPLY OPTIONS		EPL	LIST
KSGPS20200	DC Switching Power Supply 13.8VDC 20A	191.25	255.00
KSGPS20400	40A, 13.8VDC, 19" Wide Rack-Mounted Power Supply Note: Incompatible with 150W or 250W amplifier option.	356.25	475.00
KSGPS20352	35A, 13.8VDC, 19" Wide Rack-Mounted Power Supply with SmartCharger Note: Incompatible with 150W or 250W amplifier option.	1,016.25	1,355.00
MOUNTING CONFIGURATIONS		EPL	LIST
KSGMRCK3	3' (17RU) Aluminum Equipment Rack with Crate (KSGMT13000, KSGMT0C03R)	810.00	1,080.00
KSGMRCK7	7' (45RU) Aluminum Equipment Rack with Crate (KSGMT17000, KSGMT0C07R)	900.00	1,200.00
KSGMCAB4	77" (40RU) Locking Cabinet with Crate (KSGMT20040, KSGMT0C40U)	2,006.25	2,675.00
KSGMT20020	42" (20RU) Locking Cabinet	1,500.00	2,000.00
KSGMT0C20U	Crate for 42" (20RU) Locking Cabinet Note: Optional for situations where extra protection during transportation is required.	258.75	345.00
KSGMT20001	Cabinet Solid Top Panel	67.50	90.00
KSGMT20002	Cabinet Fan Top Assembly	326.25	435.00
KSGMT20003	Cabinet Solid Floor Panel (includes five pre-drilled openings and grommets)	105.00	140.00
ETHERNET SWITCH & ROUTER OPTIONS		EPL	LIST
Note: One switch is required for each site; VPN router(s) may be required for multi-site systems depending on desired configuration. When needed, VPN router(s) are required in addition to and in conjunction with network switch equipment. Multicast Router options are also available.			
KSGNS10008	8-Port Managed Network Switch Note: 1RU Mounting Tray (KSGUT10001) sold separately.	187.50	250.00
KSGNS10024	Rack Mounted 24-Port Managed Network Switch	281.25	375.00
KSGRT10004	4-Port Managed VPN Router Note: 1RU Mounting Tray (KSGUT10001) sold separately.	281.25	375.00
MISC STATION OPTIONS		EPL	LIST
KSGDX12556	6 Cavity VHF BpBr Duplexer Note: Bandpass/Bandreject duplexer, 350W continuous duty, minimum TX-RX 400 KHz. Includes one LMR-400 interface cable.	2,321.25	3,095.00
COMPONENTS		EPL	LIST
KSGDX62001	Duplexer, VHF, 148-160MHz, 6 cavities, 4.5MHz sep, N-F Note: This is the default frequency range. Other ranges may be available by special order. Frequencies must be provided with an order	446.25	595.00
KSGCB20008	Cable, 10" 90 deg N-M to 90 deg BNC-M, RG-142 coaxial	37.50	50.00
KSGCB20010	Cable, 10", 90 deg N-M to 90 deg N-M, RG-142 coaxial	37.50	50.00
KSGPS20201	Power Supply, 20A, no meter, RM-2512 w/BB6 & 8 place fuse	322.50	430.00
KSGPS20200	DC Switching Power Supply	191.25	255.00
KSGMT17000	Rack, Equipment, 7' Tall, 19 Inches Wide	487.50	650.00
KSGMT0C07R	Crate for 7' Rack	412.50	550.00
KSGMT20040	Cabinet, 40U w/Hardware Kit Pre-Punched Pontoon Base	1,616.25	2,155.00
KSGMT0C40U	Crate for 40U Cabinet	390.00	520.00
KSGUT10001	1RU Mounting Tray Note: Provides mounting space for up to two accessories.	37.50	50.00



TKR-D810

DMR UHF Repeaters - 400-520MHz

**GENERAL:**

- Occupies 2 RU
- Digital 12.5 kHz
- Analog FM 25/12.5 kHz
- 2 slot TDMA
- Mixed Mode
- Call Interruption
- Conventional and Conventional IP* Network

* Requires KTI-5

OPTIONS:

- External amplifiers with built-in T/R antenna switching for simplex operation
- Power supply options such as integrated SmartCharger and Low Voltage Disconnect for battery backup applications.
- High performance 4 and 6 cavity BpBr duplexer are also available.
- Multi-channel combining systems are quoted on an individual system basis
- Mounting options include 20 RU (42") and 40 RU (77") locking cabinets in addition to 17 RU (3') and 45 RU (7') open equipment racks.
- Amplifier choices include 40W, 100W or 150W options.
- Custom configurations are also available; contact your Kenwood Systems Regional Sales Manager for more details.

TKR-D810 REPEATER		EPL	LIST
TKR-D810K	Repeater, Digital, UHF, 450-520MHz, 5-40W Note: The Control I/O Pins of TX Data Input/TX Audio Input/RX Data Output/RX Audio Output/External Monitor Switch/External PTT Switch are NOT available.	1,668.75	2,225.00
TKR-D810K2	Repeater, Digital, UHF, 400-470MHz, 5-40W Note: The Control I/O Pins of TX Data Input/TX Audio Input/RX Data Output/RX Audio Output/External Monitor Switch/External PTT Switch are NOT available.	1,668.75	2,225.00
BASIC ACCESSORIES and LABOR		EPL	LIST
KPG-46XM	Programming Cable	118.88	158.50
KPG-174DNK	Repeater Programming Software	77.44	103.25
KPG-149RM	Nexedge Repeater Monitoring Software	187.50	250.00
KTI-5M	Network Adapter Device - Required for Conv. IP Networking Functionality Note: - Must order L-1806 or L-1807 for DMR Conventional IP Configuration - Required for each repeaters	324.00	432.00
L-1806	Instllation KPG-1010DMR Firmware and Option for KTI-5M	15.00	20.00
L-1807	KTI-5 Field Upgrade Option for DMR IP Network	15.00	20.00
B5B-7229-00	TKR-D710 Service Manual	37.50	50.00
RF BASE STATION AMPLIFIER OPTIONS		EPL	LIST
<small>Note: Includes Two Cables for Radio Connectivity.</small>			
KSGPA23421	406-450MHz, 3W Input, 20-40W Output	1,462.50	1,950.00
KSGPA23423	450-512MHz, 3W Input, 20-40W Output	1,462.50	1,950.00
KSGPA23400	406-450MHz, 3W Input, 50-100W Output	1,950.00	2,600.00
KSGPA23420	450-512MHz, 3W Input, 50-100W Output	1,950.00	2,600.00
KSGPA23451	406-450MHz, 3W Input, 150W Output	3,420.00	4,560.00
KSGPA23453	450-512MHz, 3W Input, 150W Output	3,420.00	4,560.00
KSGPA23521	406-450MHz, 25W Input, 20-40W Output	1,462.50	1,950.00
KSGPA23523	450-512MHz, 25W Input, 20-40W Output	1,462.50	1,950.00
KSGPA23500	406-450MHz, 25W Input, 50-100W Output	1,950.00	2,600.00
KSGPA23520	450-512MHz, 25W Input, 50-100W Output	1,950.00	2,600.00

KSGPA23551	406-450MHz, 25W Input, 150W Output	3,420.00	4,560.00
KSGPA23553	450-512MHz, 25W Input, 150W Output	3,420.00	4,560.00
RF REPEATER STATION AMPLIFIER OPTIONS		EPL	LIST
Note: Includes One Cable for Radio Connectivity.			
KSGPA23401	406-450MHz, 3W Input, 20-40W Output	1,248.75	1,665.00
KSGPA23403	450-512MHz, 3W Input, 20-40W Output	1,248.75	1,665.00
KSGPA23411	406-450MHz, 3W Input, 50-100W Output	1,623.75	2,165.00
KSGPA23413	450-512MHz, 3W Input, 50-100W Output	1,623.75	2,165.00
KSGPA23441	406-450MHz, 3W Input, 150W Output	2,955.00	3,940.00
RF REPEATER STATION AMPLIFIER OPTIONS, CON'T		EPL	LIST
Note: Includes One Cable for Radio Connectivity.			
KSGPA23443	450-512MHz, 3W Input, 150W Output	2,955.00	3,940.00
KSGPA23501	406-450MHz, 25W Input, 20-40W Output	1,248.75	1,665.00
KSGPA23503	450-512MHz, 25W Input, 20-40W Output	1,248.75	1,665.00
KSGPA23511	406-450MHz, 25W Input, 50-100W Output	1,623.75	2,165.00
KSGPA23513	450-512MHz, 25W Input, 50-100W Output	1,623.75	2,165.00
KSGPA23541	406-450MHz, 25W Input, 150W Output	2,955.00	3,940.00
KSGPA23543	450-512MHz, 25W Input, 150W Output	2,955.00	3,940.00
POWER SUPPLY OPTIONS		EPL	LIST
KSGPS20200	DC Switching Power Supply 13.8VDC 20A	191.25	255.00
KSGPS20400	40A, 13.8VDC, 19" Wide Rack-Mounted Power Supply Note: Incompatible with 150W amplifier option.	356.25	475.00
KSGPS20352	35A, 13.8VDC, 19" Wide Rack-Mounted Power Supply with SmartCharger Note: Incompatible with 150W amplifier option.	1,016.25	1,355.00
KSGPS20701	70A, 13.8VDC, 19" Wide Rack-Mounted Power Supply	1,016.25	1,355.00
KSGPS20702	70A, 13.8VDC, 19" Wide Rack-Mounted Power Supply with SmartCharger	1,305.00	1,740.00
MOUNTING CONFIGURATIONS		EPL	LIST
KSGMRCK3	3' (17RU) Aluminum Equipment Rack with Crate (KSGMT13000, KSGMT0C03R)	810.00	1,080.00
KSGMRCK7	7' (45RU) Aluminum Equipment Rack with Crate (KSGMT17000, KSGMT0C07R)	900.00	1,200.00
KSGMCAB4	77" (40RU) Locking Cabinet with Crate (KSGMT20040, KSGMT0C40U)	2,006.25	2,675.00
KSGMT20020	42" (20RU) Locking Cabinet	1,500.00	2,000.00
KSGMT0C20U	Crate for 42" (20RU) Locking Cabinet Note: Optional for situations where extra protection during transportation is required.	258.75	345.00
KSGMT20001	Cabinet Solid Top Panel	67.50	90.00
KSGMT20002	Cabinet Fan Top Assembly	326.25	435.00
KSGMT20003	Cabinet Solid Floor Panel (includes five pre-drilled openings and grommets)	105.00	140.00
ETHERNET SWITCH & ROUTER OPTIONS		EPL	LIST
Note: One switch is required for each site; VPN router(s) may be required for multi-site systems depending on desired configuration. When needed, VPN router(s) are required in addition to and in conjunction with network switch equipment. Multicast Router options are also available.			
KSGNS10008	8-Port Managed Network Switch Note: 1RU Mounting Tray (KSGUT10001) sold separately.	187.50	250.00
KSGNS10024	Rack Mounted 24-Port Managed Network Switch	281.25	375.00
KSGRT10004	4-Port Managed VPN Router Note: 1RU Mounting Tray (KSGUT10001) sold separately.	281.25	375.00
MISC STATION OPTIONS		EPL	LIST
KSGDX13546	6 Cavity UHF BpBr Duplexer (450-470MHz Only) Note: Bandpass/Bandreject duplexer, 250W continuous duty. Includes one LMR-400 interface cable.	2,321.25	3,095.00

KSGDX23101	4 Cavity UHF BpBr Duplexer (450-470MHz Only) Note: Bandpass/Bandreject duplexer, 350W continuous duty. Includes one LMR-400 interface cable.	1,331.25	1,775.00
COMPONENTS		EPL	LIST
KSGMT13000	Rack, Equipment, 3' Tall, 19 Inches Wide	540.00	720.00
KSGMT0C03R	Crate for 3' Rack	270.00	360.00
KSGMT17000	Rack, Equipment, 7' Tall, 19 Inches Wide	487.50	650.00
KSGMT0C07R	Crate for 7' Rack	412.50	550.00
KSGMT20040	Cabinet, 40U w/Hardware Kit Pre-Punched Pontoon Base	1,616.25	2,155.00
KSGMT0C40U	Crate for 40U Cabinet	390.00	520.00
KSGUT10001	1RU Mounting Tray Note: Provides mounting space for up to two accessories.	37.50	50.00



TKR-D810

DMR UHF Repeaters - 400-520MHz



GENERAL:

- Occupies 2 RU
- Digital 12.5 kHz
- Analog FM 25/12.5 kHz
- 2 slot TDMA
- Mixed Mode
- Call Interruption
- Conventional and Conventional IP* Network

* Requires KTI-5

OPTIONS:

- External amplifiers with built-in T/R antenna switching for simplex operation
- Power supply options such as integrated SmartCharger and Low Voltage Disconnect for battery backup applications.
- High performance 4 and 6 cavity BpBr duplexer are also available.
- Multi-channel combining systems are quoted on an individual system basis
- Mounting options include 20 RU (42") and 40 RU (77") locking cabinets in addition to 17 RU (3') and 45 RU (7') open equipment racks.
- Amplifier choices include 40W, 100W or 150W options.
- Custom configurations are also available; contact your Kenwood Systems Regional Sales Manager for more details.

TKR-D810 REPEATER	EPL	LIST
--------------------------	------------	-------------

TKR-D810K	Repeater, Digital, UHF, 450-520MHz, 5-40W Note: The Control I/O Pins of TX Data Input/TX Audio Input/RX Data Output/RX Audio Output/External Monitor Switch/External PTT Switch are NOT available.	1,668.75	2,225.00
TKR-D810K2	Repeater, Digital, UHF, 400-470MHz, 5-40W Note: The Control I/O Pins of TX Data Input/TX Audio Input/RX Data Output/RX Audio Output/External Monitor Switch/External PTT Switch are NOT available.	1,668.75	2,225.00

TKR-D810 REPEATER PACKAGE	EPL	LIST
----------------------------------	------------	-------------

TKR-D810KPS	Repeater Package Includes KSGPS20200 Power Supply (mounted internally), 450-520MHz Repeater 5-40W Note: The Control I/O Pins of TX Data Input/TX Audio Input/RX Data Output/RX Audio Output/External Monitor Switch/External PTT Switch are NOT available.	1,832.25	2,443.00
TKR-D810K2PS	Repeater Package Includes KSGPS20200 Power Supply (mounted internally), 400-470MHz Repeater 5-40W Note: The Control I/O Pins of TX Data Input/TX Audio Input/RX Data Output/RX Audio Output/External Monitor Switch/External PTT Switch are NOT available.	1,832.25	2,443.00

REPEATER STATION WITH CONVENTIONAL IP NETWORK FUNCTI	EPL	LIST
---	------------	-------------

TKR-D810KPSI	Repeater Package includes KSGPS20200 Power Supply (mounted internally), KTI-5M Network Adopter and KPG-1010DMR, 450-520MHz Repeater Note: The Control I/O Pins of TX Data Input/TX Audio Input/RX Data Output/RX Audio Output/External Monitor Switch/External PTT Switch are NOT available.	2,171.25	2,895.00
TKR-D810K2PSI	Repeater Package includes KSGPS20200 Power Supply (mounted internally), KTI-5M Network Adopter and KPG-1010DMR, 400-470MHz Repeater Note: The Control I/O Pins of TX Data Input/TX Audio Input/RX Data Output/RX Audio Output/External Monitor Switch/External PTT Switch are NOT available.	2,171.25	2,895.00

REPEATER STATION WITH DUPLEXER	EPL	LIST
---------------------------------------	------------	-------------

Note: Duplexers are not available for all frequencies. The default range of duplexers are between 148-160 MHz (VHF) with a 5MHz split between TX and RX, and between 450-460MHz (UHF). Other frequencies or VHF band splits may be available by special order (non-returnable and non-refundable). Pricing for special order duplexers may be higher. Frequencies must be provided with an order.

TKR-D810KPSD	Repeater Station 5-40W, 450-520MHz, Includes KSGPS20200 Power Supply, KSGDX63002 Duplexer, KSGCB20008 Cable, KSGCB20010 Cable Note: The Control I/O Pins of TX Data Input/TX Audio Input/RX Data Output/RX Audio Output/External Monitor Switch/External PTT Switch are NOT available.	2,279.25	3,039.00
TKR-D810K2PSD	Repeater Station 5-40W, 400-470MHz, Includes KSGPS20200 Power Supply, KSGDX63002 Duplexer, KSGCB20008 Cable, KSGCB20010 Cable Note: The Control I/O Pins of TX Data Input/TX Audio Input/RX Data Output/RX Audio Output/External Monitor Switch/External PTT Switch are NOT available.	2,279.25	3,039.00

REPEATER STATION WITH DUPLEXER AND IP NETWORK FUNCTIONALITY

EPL LIST

Note: Duplexers are not available for all frequencies. The default range of duplexers are between 148-160 MHz (VHF) with a 5MHz split between TX and RX, and between 450-460MHz (UHF). Other frequencies or VHF band splits may be available by special order (non-returnable and non-refundable). Pricing for special order duplexers may be higher. Duplexer and KTI-5M are mounted inside the Repeater; a separate Rack-Mount Power Supply is included.

REPEATER STATION WITH DUPLEXER AND IP NETWORK FUNCTIONALITY

EPL LIST

TKR-D810KPSDI	Repeater Station 5-40W, 450-520MHz Includes KSGPS20201 Power Supply, KSGDX63002 Duplexer, KTI-5M and KPG-1010DMR, KSGCB20008 Cable, KSGCB20010 Cable Note: The Control I/O Pins of TX Data Input/TX Audio Input/RX Data Output/RX Audio Output/External Monitor Switch/External PTT Switch are NOT available.	2,602.50	3,470.00
TKR-D810K2PSDI	Repeater Station 5-40W, 400-470MHz Includes KSGPS20201 Power Supply, KSGDX63002 Duplexer, KTI-5M and KPG-1010DMR, KSGCB20008 Cable, KSGCB20010 Cable Note: The Control I/O Pins of TX Data Input/TX Audio Input/RX Data Output/RX Audio Output/External Monitor Switch/External PTT Switch are NOT available.	2,602.50	3,470.00

BASIC ACCESSORIES and LABOR

EPL LIST

KPG-46XM	Programming Cable	118.88	158.50
KPG-174DNK	Repeater Programming Software	77.44	103.25
KPG-149RM	Nexedge Repeater Monitoring Software	187.50	250.00
KTI-5M	Network Adapter Device - Required for Conv. IP Networking Functionality Note: - Must order L-1806 or L-1807 for DMR Conventional IP Configuration - Required for each repeaters	324.00	432.00
L-1806	Instillation KPG-1010DMR Firmware and Option for KTI-5M	15.00	20.00
L-1807	KTI-5 Field Upgrade Option for DMR IP Network	15.00	20.00
B5B-7229-00	TKR-D710 Service Manual	37.50	50.00

POWER SUPPLY OPTIONS

EPL LIST

KSGPS20200	DC Switching Power Supply 13.8VDC 20A	191.25	255.00
KSGPS20400	40A, 13.8VDC, 19" Wide Rack-Mounted Power Supply Note: Incompatible with 150W or 250W amplifier option.	356.25	475.00
KSGPS20352	35A, 13.8VDC, 19" Wide Rack-Mounted Power Supply with SmartCharger Note: Incompatible with 150W or 250W amplifier option.	1,016.25	1,355.00

MOUNTING CONFIGURATIONS

EPL LIST

KSGMRCK3	3' (17RU) Aluminum Equipment Rack with Crate (KSGMT13000, KSGMT0C03R)	810.00	1,080.00
KSGMRCK7	7' (45RU) Aluminum Equipment Rack with Crate (KSGMT17000, KSGMT0C07R)	900.00	1,200.00
KSGMCAB4	77" (40RU) Locking Cabinet with Crate (KSGMT20040, KSGMT0C40U)	2,006.25	2,675.00
KSGMT20020	42" (20RU) Locking Cabinet	1,500.00	2,000.00
KSGMT0C20U	Crate for 42" (20RU) Locking Cabinet Note: Optional for situations where extra protection during transportation is required.	258.75	345.00
KSGMT20001	Cabinet Solid Top Panel	67.50	90.00
KSGMT20002	Cabinet Fan Top Assembly	326.25	435.00
KSGMT20003	Cabinet Solid Floor Panel (includes five pre-drilled openings and grommets)	105.00	140.00

ETHERNET SWITCH & ROUTER OPTIONS

EPL LIST

Note: One switch is required for each site; VPN router(s) may be required for multi-site systems depending on desired configuration. When needed, VPN router(s) are required in addition to and in conjunction with network switch equipment. Multicast Router options are also available.

KSGNS10008	8-Port Managed Network Switch Note: 1RU Mounting Tray (KSGUT10001) sold separately.	187.50	250.00
KSGNS10024	Rack Mounted 24-Port Managed Network Switch	281.25	375.00

KSGRT10004	4-Port Managed VPN Router Note: 1RU Mounting Tray (KSGUT10001) sold separately.	281.25	375.00
MISC STATION OPTIONS		EPL	LIST
KSGDX12556	6 Cavity VHF BpBr Duplexer Note: Bandpass/Bandreject duplexer, 350W continuous duty, minimum TX-RX 400 KHz. Includes one LMR-400 interface cable.	2,321.25	3,095.00
COMPONENTS		EPL	LIST
KSGDX63002	Duplexer, VHF, 450-460MHz, 6 cavities, 5MHz sep, N-F Note: This is the default frequency range. Other ranges may be available by special order. Frequencies must be provided with an order	446.25	595.00
COMPONENTS, CON'T		EPL	LIST
KSGCB20008	Cable, 10' 90 deg N-M to 90 deg BNC-M, RG-142 coaxial	37.50	50.00
KSGCB20010	Cable, 10', 90 deg N-M to 90 deg N-M, RG-142 coaxial	37.50	50.00
KSGPS20201	Power Supply, 20A, no meter, RM-2512 w/BB6 & 8 place fuse	322.50	430.00
KSGPS20200	DC Switching Power Supply	191.25	255.00
KSGMT17000	Rack, Equipment, 7' Tall, 19 Inches Wide	487.50	650.00
KSGMT0C07R	Crate for 7' Rack	412.50	550.00
KSGMT20040	Cabinet, 40U w/Hardware Kit Pre-Punched Pontoon Base	1,616.25	2,155.00
KSGMT0C40U	Crate for 40U Cabinet	390.00	520.00
KSGUT10001	1RU Mounting Tray Note: Provides mounting space for up to two accessories.	37.50	50.00

KAS-20

STANDALONE / MULTI-CLIENT AVL & DISPATCH SOFTWARE

The KAS-20 Software provides AVL and Dispatch capability compatible with Kenwood digital radio systems. With the capability to run under Windows and Windows Server operating systems, it provides a cost effective package for AVL and Dispatch for business, supporting both the NXDN and DMR digital protocols.

FEATURES AND HIGHLIGHTS:

- Low-Cost Initial Investment with Upgrade licenses
 - Enhanced Scalability – Standalone PC / Multi-Client Server
 - Enhanced User Interface Design for ease of use
 - Supports multiple digital radio protocols
 - User-Selectable Options – Location, Dispatch, Voice Path, Multiple Client, and Voice Recording

 - Location Management – 1,000 subscribers
 - Definable Call Dispatch Windows
 - Embedded AMBE+2 Vocoder
 - System to System Patching*
 - DMR Conventional
 - NXDN Conventional
 - NXDN Type-C Gen1 System
 - NXDN Type-C Gen2 System
- *System type and bandwidth must match in order to patch calls from different system ID.



COMPATIBLE IP CONSOLE INTERFACE*

- Kenwood DMR Conventional
- Kenwood NXDN Conventional
- Kenwood NXDN Type-C
- Kenwood NXDN Gen2

* KAS-20 does not support serial base connection

SYSTEM REQUIREMENTS*

- Windows 7, 8.1, 10 (32/64 bit OS)
- 3.0 GHz Intel Core i5 or faster CPU
- 4 GB RAM or more
- 50GB free space or more
- Internet Connection for AVL

* Refer to KAS-20 brochure for details

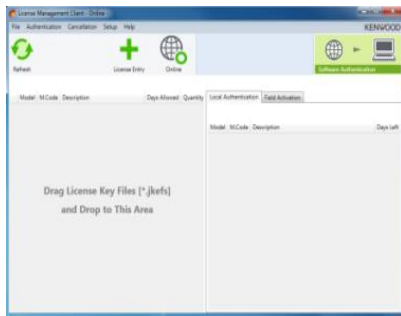
SAMPLE LICENSE		EPL	LIST
KAS-20K2	SAMPLE LICENSE VALID FOR 30 DAYS OF OPERATION Following features are enabled for 30 days after activation: - AVL (similar to KWD-20C-LMK license) - Dispatch (similar to KWD-20C-VDK license) - Voice Path (similar to one KWD-20C-VPK license)	15.00	20.00
BASE LICENSE		EPL	LIST
KAS-20K	AVL & DISPATCH SOFTWARE BASE LICENSE	NC	NC

Notes:

1. KAS-20K base license is required per individual PC or Server. Works on both KAS-20C (Client) and KAS-20S (Server).
2. Application Software for KAS-20C (Client) and KAS-20S (Server) is available on Kenwood EPL Tools.
3. Base license does not contain any of the feature licenses. Must purchase additional software upgrades to enable desired functions.
4. One KAS-20K base license allows a single connection to the RF system.

TO PLACE AN ORDER FOR WINDOWS® SOFTWARE:

1. Complete the attached Software License Key Request Form.
2. Submit along with your PO to the SYSTEMS Order Desk via:
 - a) E-Mail: systemsorderdesk@us.jvckenwood.com
 - b) Fax: (678) 957-1880
3. License Keys will be E-mailed to the address provided on the order form. A hard copy will follow by mail for your records.



**KPT-300LMC
License Management Client**

KPT-300LMC is a required software package that is used to authenticate software

KPT-300LMC is available as a free download from Kenwood Tools and is also supplied with applicable software.

NOTE: A license key is required for the KPT-300LMC to authenticate the software prior to use. To receive a license key, complete the enclosed "**Account Request Form**" and return to the Kenwood Systems Order Desk.

License Keys will be E-Mailed to the address provided on the Account Request Form. A hard copy will follow by mail for your records.

Note: KPT-300LMC is compatible with Windows 7/8.1/10 Only. Windows XP is not supported.

KPT-300LMC	License Management Client	NC	NC
SOFTWARE UPGRADE LICENSES (FOR CLIENT)		EPL	LIST
KWD-20C-VDK	Voice Dispatch License for KAS-20 client Note: KWD-20C-VDK does not contain vocoder license. IP dispatching requires additional KWD-20C-VPK for AMBE+2 voice vocoding .	500.25	667.00
KWD-20C-VPK	Voice Path License for KAS-20 client Note: Single KWD-20C-VPK allows single stream of AMBE+2 vocoding per license. Purchase multiple licenses up to 8 for simultaneous vocoding.	500.25	667.00
KWD-20C-LMK	Location Management License for KAS-20 client	500.25	667.00
SOFTWARE UPGRADE LICENSES (FOR SERVER)		EPL	LIST
KWD-20S-MCK	Server upgrade license to enable multi-client operation Note: Single KAS-20 server software holds up to ten KAS-20 clients.	1,687.50	2,250.00
KWD-20S-VRK	Server upgrade license to enable Voice Logging and Playbacks Note: Voice replay uses one KWD-20C-VPK voice path license while replaying on KAS-20 client.	1,687.50	2,250.00
KWD-20S-RSK	Server upgrade license to connect ONE additional RF system to KAS-20 system.	1,687.50	2,250.00
COMPANION PRODUCTS COMPUTERS		EPL	LIST
KSGCP30202	Windows server	3,281.25	4,375.00
KSGCP30203	Standalone PC Opt3040	956.25	1,275.00
KSGCP40001	USB Desktop Microphone A0110399	56.25	75.00
KSGSP10001	Multi-Media Desktop PC Speakers AX210 USB	37.50	50.00
COMPUTER MONITORS		EPL	LIST
KSGCP30101	22" LED Backlit LCD Monitor 1920 x 1080 resolution E2316H	281.25	375.00
KSGCP00014	24" Monitor Backlit LCD Monitor 1920 x 1080, resolution HDMI, VGA, Displayport P2417H	390.00	520.00

KENWOOD | KAIROS

KA-160

Analog/DMR VHF Repeaters - 136-174 MHz



GENERAL FEATURES

- Analog FM 12.5 kHz
- Digital 12.5 kHz
- DMR Tier 2 Conventional
- DMR Conventional IP Network
- Multi-mode Analog/Digital Repeater
- Optional Soft Diversity Reception
- Analog / Digital Simulcast Option

GENERAL OPTIONS

- Power supply options such as integrated SmartCharger and Low Voltage Disconnect for battery backup applications.
- High performance 6 cavity BpBr duplexer is also available.
- Multi-channel combining systems are quoted on an individual system basis.
- Mounting options include 20 RU (42") and 40 RU (77") locking cabinets in addition to 17 RU (3') and 45 RU (7') open equipment racks.
- Amplifier choices include 50W, 110W or 150W options.
- Custom configurations are also available; contact your KENWOOD Systems Regional Sales Manager for more details.

KAIROS REPEATER		EPL	LIST
KA-160-BPM	KAIROS Repeater, Analog/DMR, VHF, 136-174MHz, 1-25W, 100% Duty	2,655.00	3,540.00
KA-160-TX-BPM	KAIROS Transmitter Only, Analog/DMR, VHF, 136-174MHz, 1-25W, 100% Duty	2,220.00	2,960.00
KA-160-RX-BPM	KAIROS Receiver Only, Analog/DMR, VHF, 136-174MHz	2,220.00	2,960.00
SOFTWARE LICENSES		EPL	LIST
KA-MCTCSSM	License to allow the use of up to 8 different CTCSS contemporary	180.00	240.00
KA-POCSAGM	License to add POCSAG capability	457.50	610.00
KA-SI-T2M	License to allow Simulcast operation	3,802.50	5,070.00
KA-1+1M	License required for Hot Stand-by configuration <i>Note : Must purchase additional KA repeater.</i>	204.00	272.00
KA-GT2M	SIP SW License	637.50	850.00
KA-IP-CONM	Dual-mode Analog / DMR IP Connect	NC	NC
KA-TR-SSM	Tier 3 Single Site License	3,750.00	5,000.00
KA-TR-MSM	Tier 3 Multi Site MultiFreq License	5,625.00	7,500.00
KA-TR-MSSM	Tier 3 Multi Site Simulcast License	9,937.50	13,250.00
KA-P25M	Conventional P25 Phase1 License	1,777.50	2,370.00
PROGRAMMING SOFTWARE		EPL	LIST
KA-MNGM	Technical Documentation and Programming Software	153.75	205.00
NETWORK MANAGEMENT		EPL	LIST
KA-NETM	IP-Based DMR_NetControl	1,425.00	1,900.00
KA-NMSSM	Network Management System	5,625.00	7,500.00
DESIGN SERVICE			

Complex Network Design and Programming			
NTW-PROGM	Contact the Regional Sales Manager for your area to obtain a custom quote based on specific requirements, conditions, and environment.	Custom	Custom
System Design and Programming			
SYS-PROGM	Contact the Regional Sales Manager for your area to obtain a custom quote based on specific requirements, conditions, and environment.	Custom	Custom
REPEATER MOUNT (Mandatory mount option for rack mounting)		EPL	LIST
KA-RK1v2-BPM	19" Mount Panel for One KAIROS Repeaters	326.25	435.00
KA-RK2-BPM	19" Mount Panel for Two KAIROS Repeaters	326.25	435.00
KA-RK6-BPM	19" 5+1UT Rack for 6RTX	570.00	760.00
KA-VP-BPM	Front panel 10TE; required for vertical mounting configuration	80.25	107.00
HARDWARE OPTIONS		EPL	LIST
KA-GPSM	GPS Receiver for Simulcast Operation	300.00	400.00
GPS-ANTM	GPS Antenna for Simulcast Operation	300.00	400.00
DVX-VHFM	Diversity RX filter for VHF 136 - 174 MHz	750.00	1,000.00
KA-VOC-2M	Internal Imbedded DMR Vocoder, 2 Lines plus GPS Receiver	487.50	650.00
RF REPEATER STATION AMPLIFIER OPTIONS		EPL	LIST
Note: Includes One Cable for Radio Connectivity.			
KSGPA22403	136-174MHz, 3W Input, 25-50W Output	1,248.75	1,665.00
KSGPA22411	136-144MHz, 3W Input, 55-110W Output	1,620.00	2,160.00
KSGPA22412	144-152MHz, 3W Input, 55-110W Output	1,620.00	2,160.00
KSGPA22413	152-162MHz, 3W Input, 55-110W Output	1,620.00	2,160.00
KSGPA22414	162-174MHz, 3W Input, 55-110W Output	1,620.00	2,160.00
KSGPA22723	152-162MHz, 3W Input, 100W Output, 5-Pack Note: KSGMT90005 cage is required; see Mounting Configurations section below	1,462.50	1,950.00
KSGPA22724	162-174MHz, 3W Input, 100W Output, 5-Pack Note: KSGMT90005 cage is required; see Mounting Configurations section below	1,462.50	1,950.00
KSGPA22441	136-144MHz, 3W Input, 150W Output	2,295.00	3,060.00
KSGPA22442	144-152MHz, 3W Input, 150W Output	2,295.00	3,060.00
KSGPA22443	152-162MHz, 3W Input, 150W Output	2,295.00	3,060.00
KSGPA22444	162-174MHz, 3W Input, 150W Output	2,295.00	3,060.00
KSGPA22253	152-162MHz, 3W Input, 250W Output	3,045.00	4,060.00
POWER SUPPLY OPTIONS		EPL	LIST
KSGPS20200	DC Switching Power Supply 13.8VDC 20A	191.25	255.00
KSGPS20400	40A, 13.8VDC, 19" Wide Rack-Mounted Power Supply Note: Incompatible with 150W or 250W amplifier option.	356.25	475.00
KSGPS20352	35A, 13.8VDC, 19" Wide Rack-Mounted Power Supply with SmartCharger Note: Incompatible with 150W or 250W amplifier option.	1,016.25	1,355.00
KSGPS20701	70A, 13.8VDC, 19" Wide Rack-Mounted Power Supply	1,016.25	1,355.00
KSGPS20702	70A, 13.8VDC, 19" Wide Rack-Mounted Power Supply with SmartCharger	1,305.00	1,740.00
MOUNTING RACK		EPL	LIST
KSGMCAB4	77" (40RU) Locking Cabinet with Crate (KSGMT20040, KSGMT0C40U)	2,206.88	2,942.50
KSGMRCK3	3' (17RU) Aluminum Equipment Rack with Crate (KSGMT13000, KSGMT0C03R)	810.00	1,080.00
KSGMRCK7	7' (45RU) Aluminum Equipment Rack with Crate (KSGMT17000, KSGMT0C07R)	900.00	1,200.00
KSGMT20020	42" (20RU) Locking Cabinet	1,500.00	2,000.00
KSGMT0C20U	Crate for 42" (20RU) Locking Cabinet Note: Optional for situations where extra protection during transportation is required.	297.56	396.75

MOUNTING RACK cont'd		EPL	LIST
KSGMT20001	Cabinet Solid Top Panel	67.50	90.00
KSGMT20002	Cabinet Fan Top Assembly	326.25	435.00
KSGMT20003	Cabinet Solid Floor Panel (includes five pre-drilled openings and grommets)	105.00	140.00
VP-10-BPM	Closure 10TE, for vertical mounting	75.00	100.00
VP-4-BPM	Closure 4TE, for vertical mounting	45.00	60.00
KSGMT90005	Cage, Black, required when ordering 5-Pack Amplifiers only	506.25	675.00
ETHERNET SWITCH & ROUTER OPTIONS		EPL	LIST
Note: One switch is required for each site; VPN router(s) may be required for multi-site systems depending on desired configuration. When needed, VPN router(s) are required in addition to and in conjunction with network switch equipment. Multicast Router options are also available.			
KSGNS10008	8-Port Managed Network Switch Note: 1RU Mounting Tray (KSGUT10001) sold separately.	187.50	250.00
KSGNS10024	Rack Mounted 24-Port Managed Network Switch	281.25	375.00
KSGRT10004	4-Port Managed VPN Router Note: 1RU Mounting Tray (KSGUT10001) sold separately.	281.25	375.00
KSGMS100P1	15A Power Strip, 19" Rackmount, 1RU Note: One recommended per rack when including a switch and/or router	68.25	91.00
KSGUT10001	1RU Mounting Tray Note: Provides mounting space for up to two accessories.	37.50	50.00
DUPLEXER		EPL	LIST
KSGDX12556	6 Cavity VHF BpBr Duplexer Note: Bandpass/Bandreject duplexer, 350W continuous duty, minimum TX-RX 400 KHz. Includes one LMR-400 interface cable.	2,321.25	3,095.00
COMPONENTS		EPL	LIST
KSGMT13000	Rack, Equipment, 3' Tall, 19 Inches Wide	540.00	720.00
KSGMT0C03R	Crate for 3' Rack	270.00	360.00
KSGMT17000	Rack, Equipment, 7' Tall, 19 Inches Wide	487.50	650.00
KSGMT0C07R	Crate for 7' Rack	412.50	550.00
KSGMT20040	Cabinet, 40U w/Hardware Kit Pre-Punched Pontoon Base	1,777.50	2,370.50
KSGMT0C40U	Crate for 40U Cabinet	390.00	520.00
KSGTM10TCS	Case, Tone Term Panel	48.75	65.00

KENWOOD | KAIROS

KA-450/500 Analog/DMR UHF Repeaters



GENERAL FEATURES

- Analog FM 12.5 kHz
- Digital 12.5 kHz
- DMR Tier 2 Conventional
- DMR Conventional IP Network
- Multi-mode Analog/Digital Repeater
- Optional Soft Diversity Reception
- Analog / Digital Simulcast Option
- System Redundancy

GENERAL OPTIONS

- Power supply options such as integrated SmartCharger and Low Voltage Disconnect for battery backup applications.
- High performance 4 and 6 cavity BpBr duplexer are also available.
- Multi-channel combining systems are quoted on an individual system basis.
- Mounting options include 20 RU (42") and 40 RU (77") locking cabinets in addition to 17 RU (3') and 45 RU (7') open equipment racks.
- Amplifier choices include 40W, 100W or 150W options.
- Custom configurations are also available; contact your KENWOOD Systems Regional Sales Manager for more details.

KAIROS REPEATERS		EPL	LIST
KA-450-BPM	KAIROS Repeater, Analog/DMR, UHF, 400-470MHz, 1-25W, 100% Duty	2,655.00	3,540.00
KA-450-TX-BPM	KAIROS Transmitter Only, Analog/DMR, UHF, 400-470MHz, 1-25W, 100% Duty	2,220.00	2,960.00
KA-450-RX-BPM	KAIROS Receiver Only, Analog/DMR, UHF, 400-470MHz	2,220.00	2,960.00
KA-500-BPM	KAIROS Repeater, Analog/DMR, UHF, 450-512MHz, 1-25W, 100% Duty	2,655.00	3,540.00
KA-500-TX-BPM	KAIROS Transmitter Only, Analog/DMR, UHF, 450-512MHz, 1-25W, 100% Duty	2,220.00	2,960.00
KA-500-RX-BPM	KAIROS Receiver Only, Analog/DMR, UHF, 450-512MHz	2,220.00	2,960.00
SOFTWARE LICENSES		EPL	LIST
KA-MCTCSSM	License to allow the use of up to 8 different CTCSS contemporary	180.00	240.00
KA-POCSAGM	License to add POCSAG capability	457.50	610.00
KA-SI-T2M	License to allow Simulcast operation	3,802.50	5,070.00
KA-1+1M	License required for Hot Stand-by configuration Note : Must purchase additional KA repeater.	204.00	272.00
KA-GT2M	SIP SW License	637.50	850.00
KA-IP-CONM	Dual-mode Analog / DMR IP Connect	NC	NC
KA-TR-SSM	Tier 3 Single Site License	3,750.00	5,000.00
KA-TR-MSM	Tier 3 Multi Site MultiFreq License	5,625.00	7,500.00
KA-TR-MSSM	Tier 3 Multi Site Simulcast License	9,937.50	13,250.00
KA-P25M	Conventional P25 Phase1 License	1,777.50	2,370.00
PROGRAMMING SOFTWARE		EPL	LIST
KA-MNGM	Technical Documentation and Programming Software	153.75	205.00
NETWORK MANAGEMENT		EPL	LIST
KA-NETM	IP-Based DMR_NetControl	1,425.00	1,900.00

KA-NMSM	Network Management System	5,625.00	7,500.00
DESIGN SERVICE			
NTW-PROGM	Complex Network Design and Programming <i>Contact the Regional Sales Manager for your area to obtain a custom quote based on specific requirements, conditions, and environment.</i>	Custom	Custom
SYS-PROGM	System Design and Programming <i>Contact the Regional Sales Manager for your area to obtain a custom quote based on specific requirements, conditions, and environment.</i>	Custom	Custom
REPEATER MOUNT (Mandatory mount option for rack mounting)		EPL	LIST
KA-RK1v2-BPM	19" Mount Panel for One KAIROS Repeaters	326.25	435.00
KA-RK2-BPM	19" Mount Panel for Two KAIROS Repeaters	326.25	435.00
KA-RK6-BPM	19" 5+1UT Rack for 6RTX	570.00	760.00
KA-VP-BPM	Front panel 10TE; required for vertical mounting configuration	80.25	107.00
HARDWARE OPTIONS		EPL	LIST
KA-GPSM	GPS Receiver for Simulcast Operation	300.00	400.00
GPS-ANTM	GPS Antenna for Simulcast Operation	300.00	400.00
DVX-UHF	Diversity RX filter for UHF 400 - 470 MHz	750.00	1,000.00
KA-VOC-2M	Internal Imbedded DMR Vocoder, 2 Lines plus GPS Receiver	487.50	650.00
RF REPEATER STATION AMPLIFIER OPTIONS		EPL	LIST
Note: Includes One Cable for Radio Connectivity.			
KSGPA23401	406-450MHz, 3W Input, 20-40W Output	1,248.75	1,665.00
KSGPA23403	450-512MHz, 3W Input, 20-40W Output	1,248.75	1,665.00
KSGPA23411	406-450MHz, 3W Input, 50-100W Output	1,623.75	2,165.00
KSGPA23413	450-512MHz, 3W Input, 50-100W Output	1,623.75	2,165.00
KSGPA23702	403-450MHz, 3W Input, 100W Output, 5-Pack Note: KSGMT90005 cage is required; see Mounting Configurations section below	1,680.00	2,240.00
KSGPA23703	450-512MHz, 3W Input, 100W Output, 5-Pack Note: KSGMT90005 cage is required; see Mounting Configurations section below	1,680.00	2,240.00
KSGPA23441	406-450MHz, 3W Input, 150W Output	2,955.00	3,940.00
KSGPA23443	450-512MHz, 3W Input, 150W Output	2,955.00	3,940.00
POWER SUPPLY OPTIONS		EPL	LIST
KSGPS20200	DC Switching Power Supply 13.8VDC 20A	191.25	255.00
KSGPS20400	40A, 13.8VDC, 19" Wide Rack-Mounted Power Supply Note: Incompatible with 150W amplifier option.	356.25	475.00
KSGPS20352	35A, 13.8VDC, 19" Wide Rack-Mounted Power Supply with SmartCharger Note: Incompatible with 150W amplifier option.	1,016.25	1,355.00
KSGPS20701	70A, 13.8VDC, 19" Wide Rack-Mounted Power Supply	1,016.25	1,355.00
KSGPS20702	70A, 13.8VDC, 19" Wide Rack-Mounted Power Supply with SmartCharger	1,305.00	1,740.00
MOUNTING RACK		EPL	LIST
KSGMRCK3	3' (17RU) Aluminum Equipment Rack with Crate (KSGMT13000, KSGMT0C03R)	810.00	1,080.00
KSGMRCK7	7' (45RU) Aluminum Equipment Rack with Crate (KSGMT17000, KSGMT0C07R)	900.00	1,200.00
KSGMCAB4	77" (40RU) Locking Cabinet with Crate (KSGMT20040, KSGMT0C40U)	2,006.88	2,942.50
KSGMT20020	42" (20RU) Locking Cabinet	1,500.00	2,000.00
KSGMT0C20U	Crate for 42" (20RU) Locking Cabinet Note: Optional for situations where extra protection during transportation is required.	297.56	396.75
KSGMT20001	Cabinet Solid Top Panel	67.50	90.00
KSGMT20002	Cabinet Fan Top Assembly	326.25	435.00
KSGMT20003	Cabinet Solid Floor Panel (includes five pre-drilled openings and grommets)	105.00	140.00
VP-10-BPM	Closure 10TE, for vertical mounting	75.00	100.00
VP-4-BPM	Closure 4TE, for vertical mounting	45.00	60.00

MOUNTING RACK cont'd		EPL	LIST
KSGMT90005	Cage, Black, required when ordering 5-Pack Amplifiers only	506.25	675.00
ETHERNET SWITCH & ROUTER OPTIONS		EPL	LIST
Note: One switch is required for each site; VPN router(s) may be required for multi-site systems depending on desired configuration. When needed, VPN router(s) are required in addition to and in conjunction with network switch equipment. Multicast Router options are also			
KSGNS10008	8-Port Managed Network Switch Note: 1RU Mounting Tray (KSGUT10001) sold separately.	187.50	250.00
KSGNS10024	Rack Mounted 24-Port Managed Network Switch	281.25	375.00
KSGRT10004	4-Port Managed VPN Router Note: 1RU Mounting Tray (KSGUT10001) sold separately.	281.25	375.00
KSGMS100P1	15A Power Strip, 19" Rackmount, 1RU Note: One recommended per rack when including a switch and/or router	68.25	91.00
KSGUT10001	1RU Mounting Tray Note: Provides mounting space for up to two accessories.	37.50	50.00
DUPLEXER		EPL	LIST
KSGDX13546	6 Cavity UHF BpBr Duplexer (450-470MHz Only) Note: Bandpass/Bandreject duplexer, 250W continuous duty. Includes one LMR-400 interface cable.	2,321.25	3,095.00
KSGDX23101	4 Cavity UHF BpBr Duplexer (450-470MHz Only) Note: Bandpass/Bandreject duplexer, 350W continuous duty. Includes one LMR-400 interface cable.	1,331.25	1,775.00
COMPONENTS		EPL	LIST
KSGMT13000	Rack, Equipment, 3' Tall, 19 Inches Wide	540.00	720.00
KSGMT0C03R	Crate for 3' Rack	270.00	360.00
KSGMT17000	Rack, Equipment, 7' Tall, 19 Inches Wide	487.50	650.00
KSGMT0C07R	Crate for 7' Rack	412.50	550.00
KSGMT20040	Cabinet, 40U w/Hardware Kit Pre-Punched Pontoon Base	1,777.88	2,370.50
KSGMT0C40U	Crate for 40U Cabinet	390.00	520.00

